

eFLOW

Client Installation Guide

Version 5.2

Copyright © TIS, Top Image Systems. All rights reserved.

No part of this publication may be reproduced, stored in a retrieval system, translated, transcribed or transmitted in any form, or by any means manual, electric, electronic, electromagnetic, mechanical, chemical, optical, or otherwise, without the prior explicit written permission of TIS.

Contents

eFLOW client installation	4
System requirements	4
Hardware requirements	4
Software requirements	4
Download the eFLOW installation package	5
Run the Installation Launcher	5
Follow the eFLOW Installation Wizard	8
Check the communication with the eFLOW server	11
If the prerequisites validations fail	12
.NET framework validation	12
COMPLUS_ENABLE_64BIT validation	12

eFLOW client installation

This document explains how to install eFLOW on a client machine. See the *eFLOW Installation Guide* for information on how to install eFLOW on a server.

System requirements

This section lists the minimum hardware and software requirements for the client machine.

Hardware requirements

Automatic stations

Component	Minimum requirement per station
Processor	Pentium 4 2.0 GHz
RAM	2 GB
Hard disk free space	15 GB for setup and dynamic data 3.5 GB for the OCR installation 0.5 GB for the eFLOW platform installation

Manual stations

Component	Minimum requirement
Processor	Pentium 4 2.0 GHz
RAM	2 GB
Display resolution	640x480, 16 colors. We recommend using displays with a resolution of 1920x1080 and 32-bit true color.
Hard disk free space	15 GB for setup and dynamic data 0.5 GB for the eFLOW platform installation

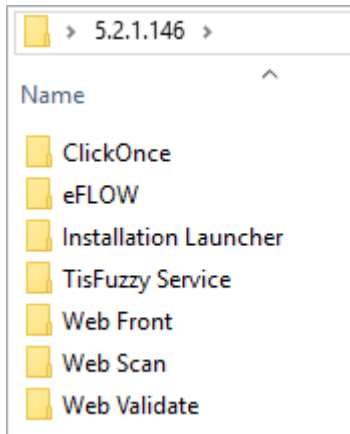
Software requirements

The .NET 4.5 framework must be installed.

Download the eFLOW installation package

You can download the eFLOW installation package from the TIS FTP site.

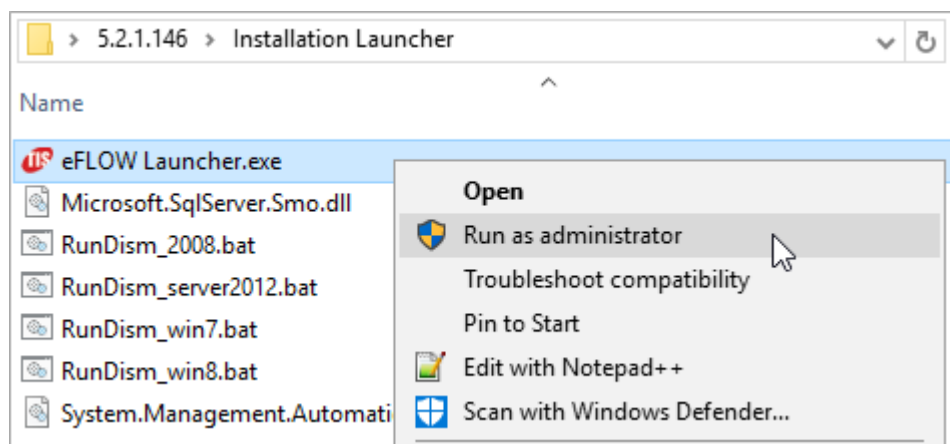
Download and unzip the installation package to the client machine.



Run the Installation Launcher

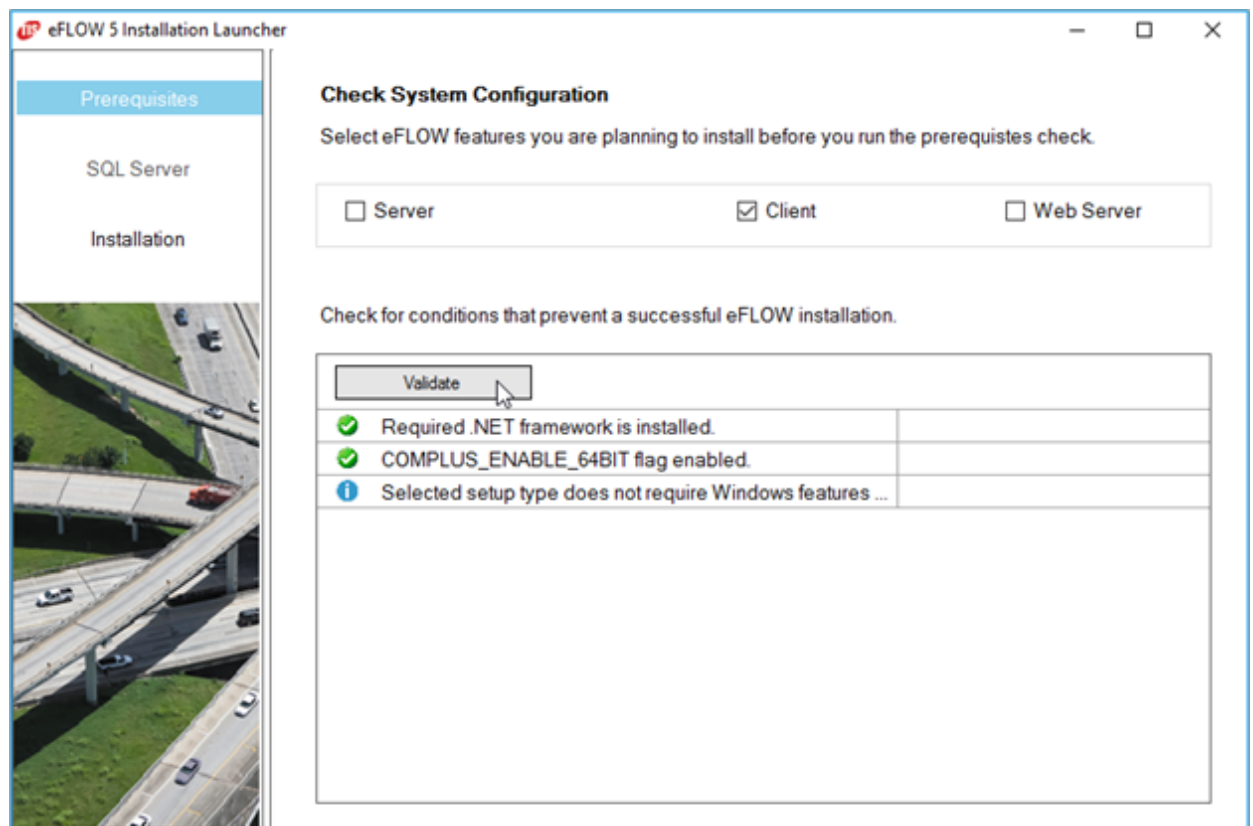
The eFLOW Installation Launcher helps to avoid installation errors. It clearly defines the installation steps and checks the eFLOW software prerequisites configuration before initiating the platform installation. You can install missing prerequisites directly from the Launcher.

1. In the eFLOW installation folder, open the *Installation Launcher* folder.
2. Right-click on the file *eFLOW Launcher.exe* and select **Run as administrator**.



The eFLOW Installation Launcher opens.

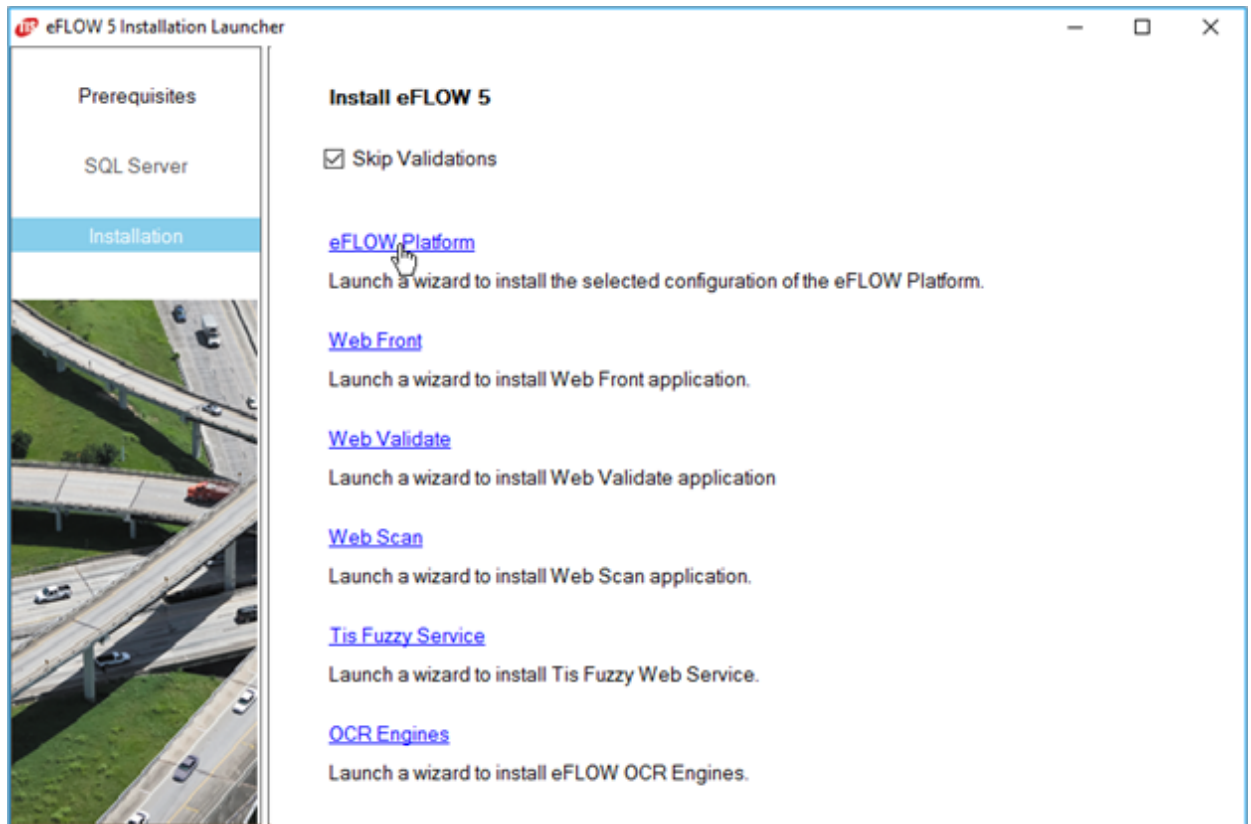
3. In the **Prerequisites** tab:
 - a. Clear the **Server** check box.
 - b. Check the **Client** check box.
 - c. Click the **Validate** button.



If the prerequisites are fulfilled, you can continue with the installation. See [If the prerequisites validations fail](#) for information on what to do if the prerequisites are not fulfilled.

4. Click **Installation** to display the **Installation** tab.
5. Check the **Skip Validations** check box if you do not need to repeat the prerequisites check before starting the installation.

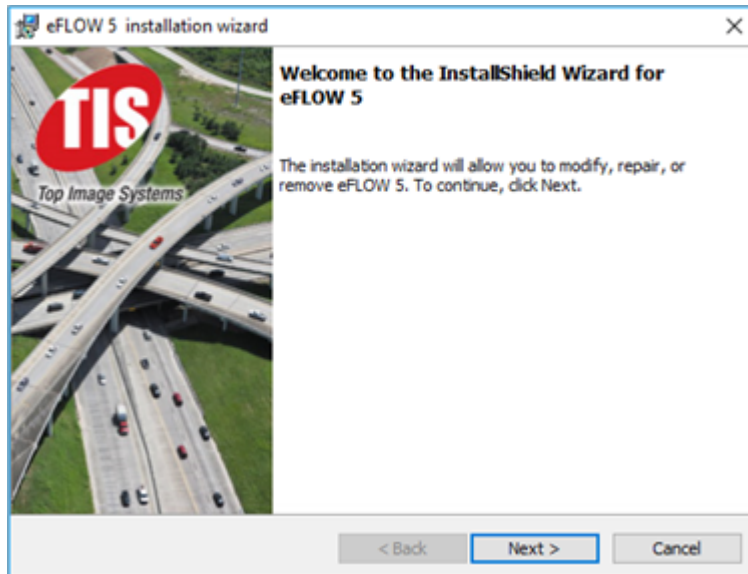
6. Click **eFLOW Platform**.



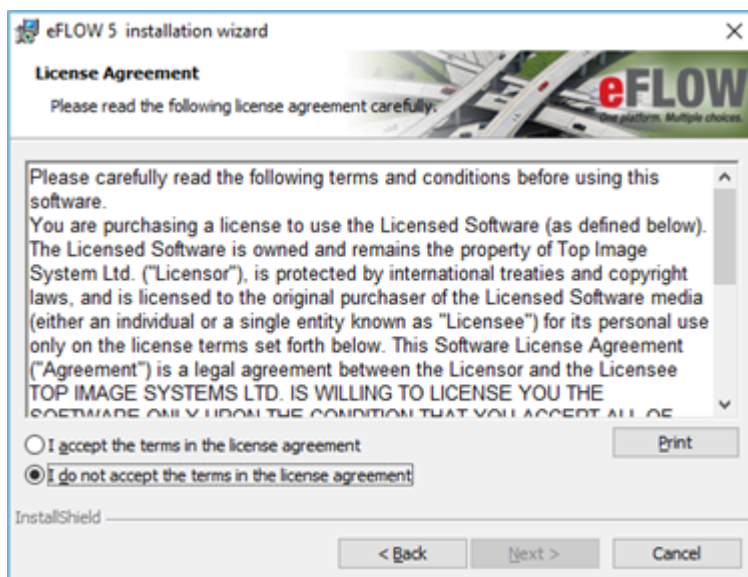
The eFLOW Installation Wizard opens.

Follow the eFLOW Installation Wizard

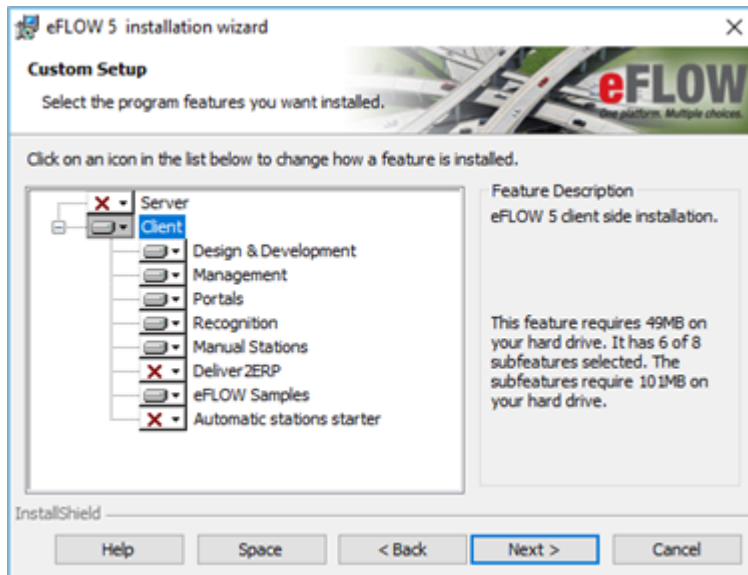
1. In the **Welcome** screen, click the **Next** button.



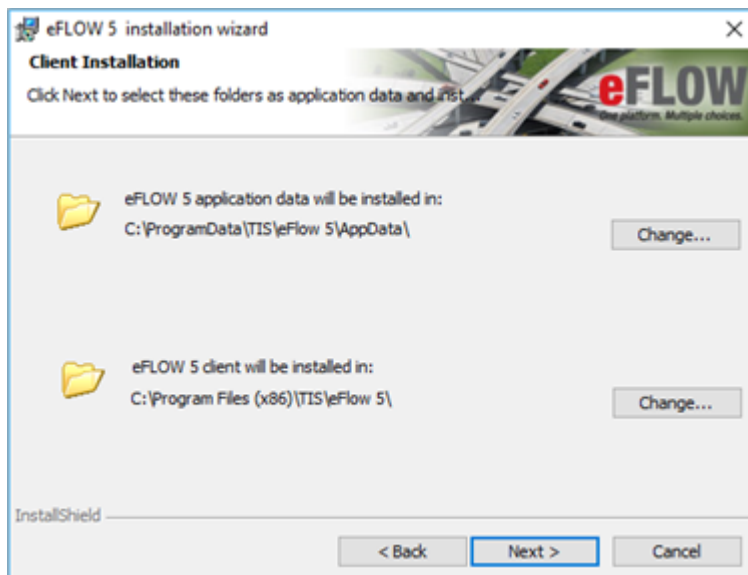
2. Agree to the terms of the license agreement to start the installation.



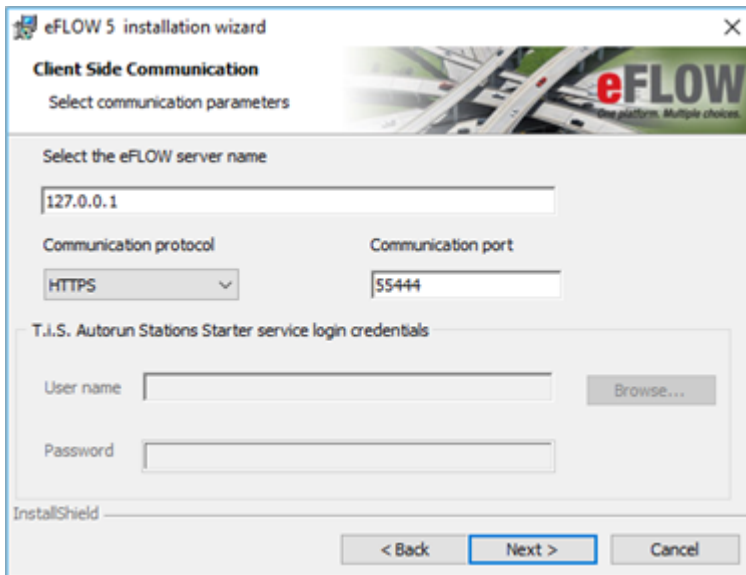
3. Select the installation features.



4. Set the installation paths.

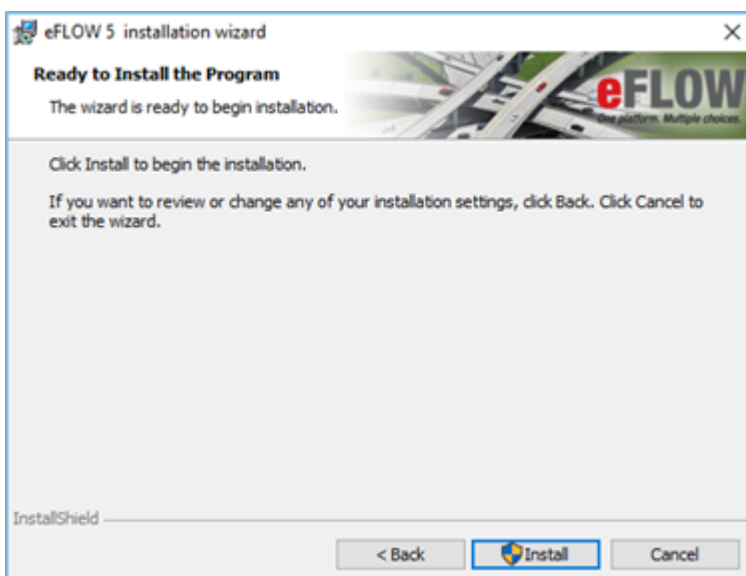


5. Set the communication parameters.



- **eFLOW server name:** Name of the EFLOW server to which the client will connect. You can use either the DNS name or the IP address.
- The **Communication protocol** type and the **Communication port** number should be the same as those set on the eFLOW server.
- The **T.i.S. Autorun Stations Starter service login credentials** panel is enabled only if the Autorun Stations Starter service is selected for installation. By default, this service is configured to run under the **LocalSystem** account. You can use any other account, provided that it has **LogonAsService** permissions.

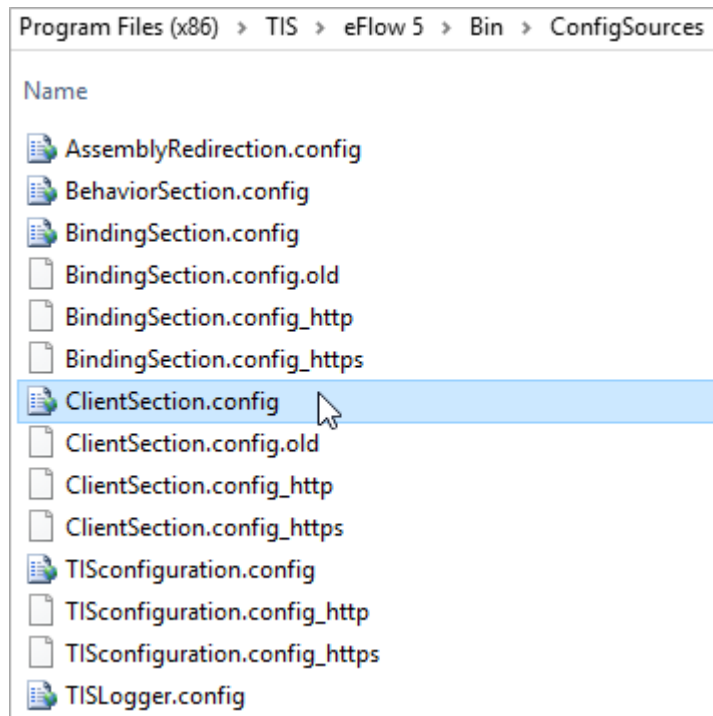
6. Click the **Install** button to start the installation.



Check the communication with the eFLOW server

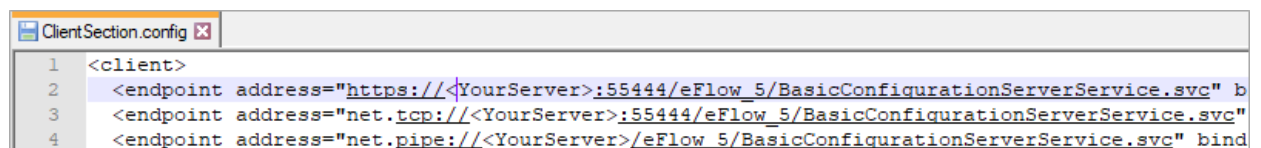
After the installation has been completed, follow these steps to check that communication between the client and the eFLOW server is functioning correctly.

1. In the folder *C:\Program Files (x86)\TIS\eFlow 5\Bin\ConfigSources*, open the file *ClientSection.config* in a text editor.



2. Copy the endpoint address, for example:

http://<YourServer>:55222/eFlow_5/BasicConfigurationServerService.svc.



- Open your web browser and paste the endpoint address into the browser's address line.

If the following page, or a similar one, is displayed, the communication with the eFLOW server is functioning correctly.

Service

This is a Windows® Communication Foundation service.

Metadata publishing for this service is currently disabled.

If you have access to the service, you can enable metadata publishing by completing the following steps to modify your web or application configuration file:

- Create the following service behavior configuration, or add the <serviceMetadata> element to an existing service behavior configuration:


```

<behaviors>
  <serviceBehaviors>
    <behavior name="MyServiceTypeBehaviors" >
      <serviceMetadata httpGetEnabled="true" />
    </behavior>
  </serviceBehaviors>
</behaviors>

```
- Add the behavior configuration to the service:


```

<service name="MyNamespace.MyServiceType" behaviorConfiguration="MyServiceTypeBehaviors" >

```

Note: the service name must match the configuration name for the service implementation.

- Add the following endpoint to your service configuration:


```

<endpoint contract="IMetadataExchange" binding="mexHttpBinding" address="mex" />

```

Note: your service must have an http base address to add this endpoint.

If the prerequisites validations fail

This section explains what you can do if the prerequisites validations are not successful.

.NET framework validation

The full .NET 4.5 framework is required to run eFLOW modules. This validation will fail if the full .NET Framework 4.5 installation is missing.

- Click **Install .NET framework** to install the full .NET 4.5 framework from the Launcher.
- Run the .NET 4.5 framework installation directly from the eFLOW installation folder.

COMPLUS_ENABLE_64BIT validation

64-bit machines are expected to be working in 64-bit mode. This validation checks if the **COMPLUS_ENABLE_64BIT** flag is set.

- Click **SetWOW 64-Bit flag** in the Launcher to configure the **COMPLUS_ENABLE_64BIT** flag.
- Run **C:\WINDOWS\Microsoft.NET\Framework64\v2.0.50727\Ldr64.exe Set64** from the command prompt.