

# XML Email Input Adapter

For ReadSoft Service Bus

July 2015 – ReadSoft AB



---

© 2015 Lexmark International Technology, S.A. All rights reserved.

Lexmark is a trademark of Lexmark International, Inc., registered in the U.S. and/or other countries. All other trademarks are the property of their respective owners. No part of this publication may be reproduced, stored, or transmitted in any form without the prior written permission of Lexmark.

1	Overview .....	4
1.1	XML Email Input Adapter .....	4
1.2	Key concepts and features .....	4
1.3	Components.....	5
2	Installation.....	5
3	Configuration .....	5
3.1	Create a document service .....	5
3.2	Configure input activity settings .....	7

## 1 Overview

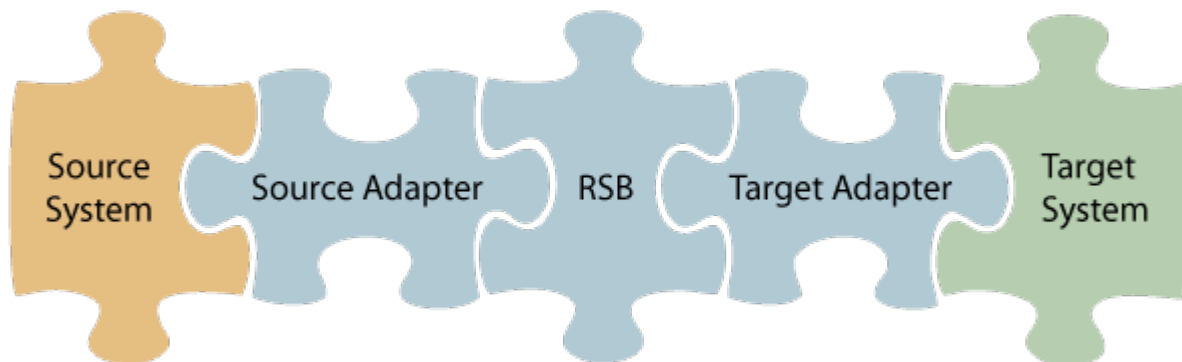
This document describes the XML Email Input Adapter for ReadSoft Service Bus.

ReadSoft Service Bus is an integration platform that extends ReadSoft solutions by providing universal capabilities for integrating and customizing document-driven processes. ReadSoft Service Bus (RSB) adds high customer value to ReadSoft solutions and reduces solution implementation times for custom projects. It is service-orientated, expandable, facilitates easy integration and allows component reuse across multiple systems.

RSB uses adapters to facilitate communication between systems.

- **Source adapters** send data from a source system to RSB.
- **Target adapters** send data from RSB to a target system.

You can combine source and target adapters to connect any system supported by ReadSoft Service Bus.



### 1.1 XML Email Input Adapter

The XML Email Input Adapter creates RSB documents from email messages that contain XML files and image attachments. Image attachments are optional, but the each email must contain one XML file that contains the invoice data. Only one image attachment is used in the final RSB document, if more than one image attachment is included in an email. The settings you specify in the adapter settings determine which image attachment is used (if any, or more than one, exists).

By using XML Email Input Adapter in combination with a target adapter of your choice, you can send XML invoices to any supported target system.

### 1.2 Key concepts and features

The XML Email Input Adapter:

- Automatically converts incoming XML email to RSB documents.

- Accepts one XML file attachment, which contains invoice data, and one, optional image attachment.
- Is quick and easy to set up.

## 1.3 Components

The XML Email Input Adapter is a part of a larger solution which includes:

- **XML Email Input Adapter** – converts incoming XML email to RSB documents.
- **RSB** – coordinates communication between adapters and transforms electronic invoice data to a common format.
- **Target adapters** – send invoice data and images from RSB to a target system, such as SAP, SharePoint or Open Text.

## 2 Installation

You can install the XML Email Input Adapter after you install ReadSoft Service Bus. See the [RSB Installation Guide](#) for more information about installing RSB.

## 3 Configuration

After you install ReadSoft Service Bus and the appropriate adapters, you must configure RSB. The basic steps you perform are:

1. [Create a document service](#) to coordinate the transfer of documents.
2. [Configure source activity settings](#).
3. Configure target activity settings, if necessary.

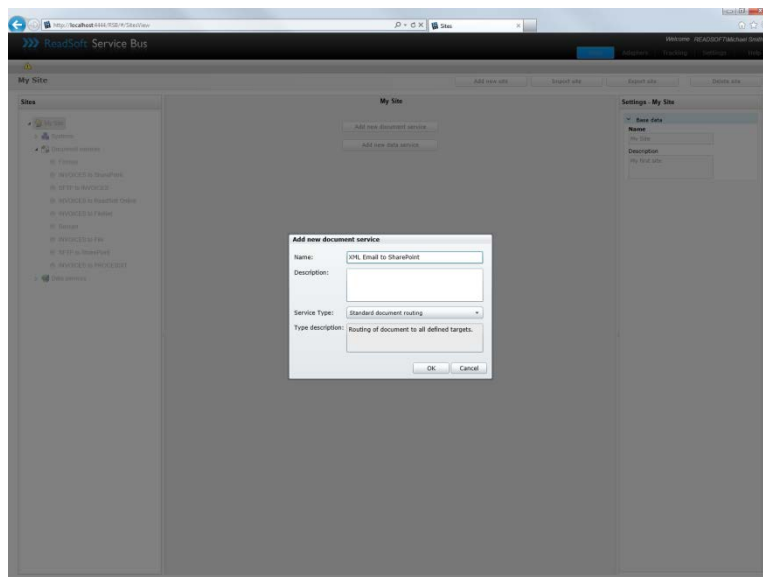
After you complete the configuration, you must activate the document service before you can use it.

### 3.1 Create a document service

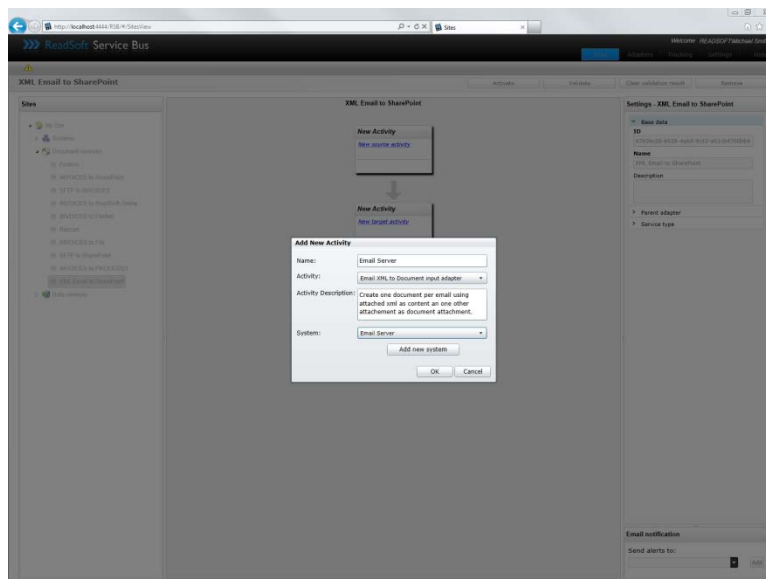
You create a document service and configure the XML Email Input Adapter using the RSB administration page.

See Help for more details about the procedures outlined below.

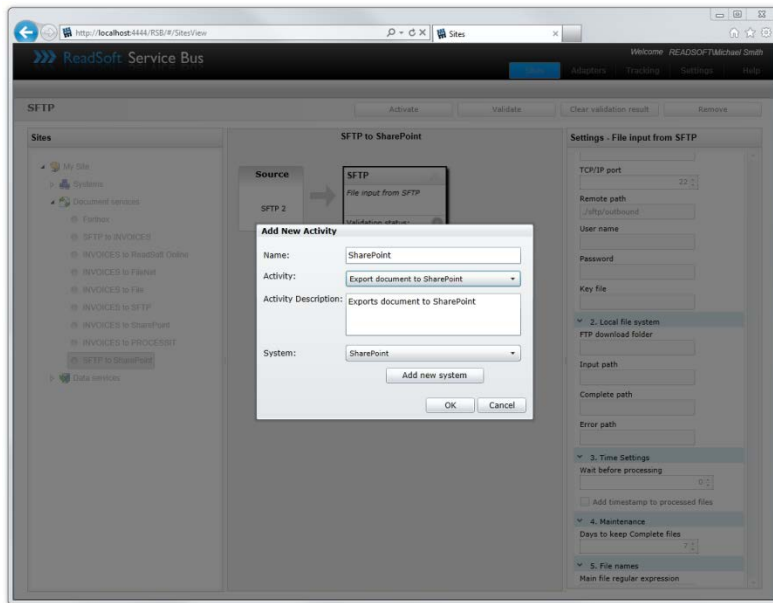
1. Select the **Document services** node and click **Add new document service**.
2. Select **Standard document routing** as the **Service type**.



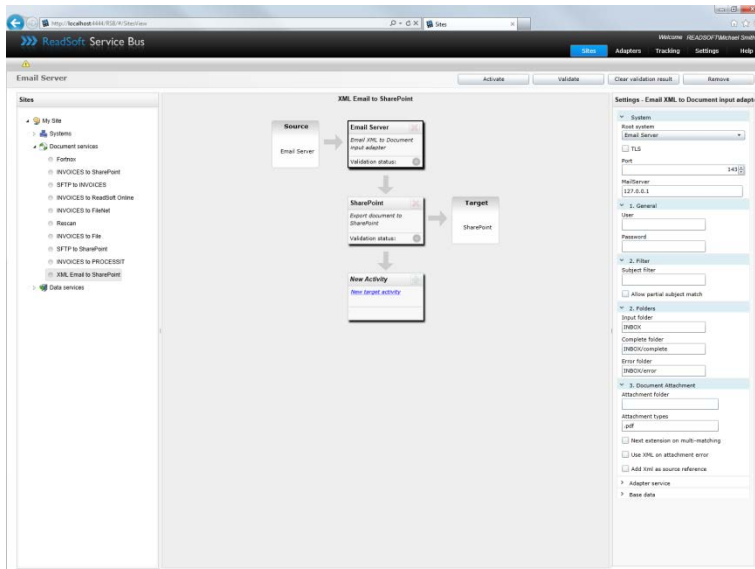
3. Create a new source activity and select **Email XML to Document input adapter** as the **Activity**. If there is no **System** to select, click **Add new system** and use the dialog that appears to describe the source system.



4. Create a new target activity and use the **Activity** setting to specify your target adapter. If there is no **System** to select, click **Add new system** and use the dialog that appears to describe the target system.



5. Select the source system in the design area to display and adjust its settings.



## 3.2 Configure input activity settings

After you create a document service that uses the XML Email Input Adapter, there are a few settings you must adjust. Select the source system activity in the design view to adjust its settings.

### System

#### Root system

Specifies the system (defined in RSB) that the activity uses.

<b>TLS</b>	Specifies whether transport-level security is used.
<b>Port</b>	The port to use to connect to the mail server. For example: 143 for IMAP or 993 for IMAP SSL.
<b>Mail server</b>	The address of the mail server you want to get XML email invoices from.
<b>General</b>	
<b>User</b>	The user name needed to access the email account.
<b>Password</b>	The password for the <b>User</b> .
<b>Subject filter</b>	A regular expression that the subject must match in order to be accepted by the XML Email Input Adapter. If the subject does not match the regular expression, the email is ignored.
<b>Allow partial subject match</b>	Specifies whether partial matches to the <b>Subject filter</b> are accepted.
<b>Folders</b>	
<b>Input folder</b>	The mail box where the XML Email Input Adapter looks for input email.
<b>Complete folder</b>	The mail box where complete email is saved.
<b>Error folder</b>	The mail box where email with errors is saved.
<b>Document attachment</b>	
<b>Attachment folder</b>	The folder where document attachments are saved.
<b>Attachment types</b>	A comma-separated list of valid file extensions to accept as attachments. Example: .pdf, .tif, .jpg
<b>Next extension on multi-matching</b>	Specifies whether the adapter uses the first attachment that matches the <b>Attachment types</b> , or if it continues to the next attachment until there are no more matches.  <b>Example</b> Assume <b>Next extension on multi-matching</b> is not selected and an email with the following attachments is received: File1.xml File2.pdf File3.pdf File4.tif  In this case, the first match, File2.pdf, is used as the attachment because it is



	the first non-XML attachment that is found. However, if <b>Next extension on multi-matching</b> is selected, <code>File4.pdf</code> , is used because the adapter goes to the next file-extension match until no more matches are found.
<b>Use XML on attachment error</b>	Determines whether the adapter uses the XML file as the document attachment if the adapter cannot determine which file to use as an attachment. This can occur if the XML file is the only attachment or if the other attachments do not match the <b>Attachment types</b> .
<b>Add XML as source reference</b>	Determines whether the original XML is attached to the RSB document as a source reference.