

# SAP Target Adapter

## For ReadSoft Service Bus

July 2015 – ReadSoft AB

© 2015 Lexmark International Technology, S.A. All rights reserved.

Lexmark is a trademark of Lexmark International, Inc., registered in the U.S. and/or other countries. All other trademarks are the property of their respective owners. No part of this publication may be reproduced, stored, or transmitted in any form without the prior written permission of Lexmark.

1	Overview .....	4
1.1	SAP Target Adapter.....	4
1.2	Key concepts and features .....	4
1.3	Components.....	5
2	Installation.....	5
3	Configuration .....	5
3.1	Create a document service .....	6
3.2	Configure target activity settings.....	8

## 1 Overview

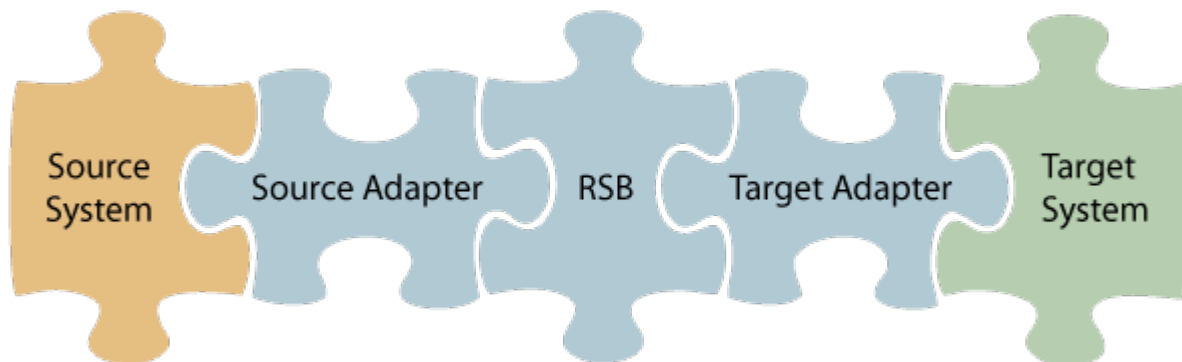
This document describes the SAP Target Adapter for ReadSoft Service Bus.

ReadSoft Service Bus is an integration platform that extends ReadSoft solutions by providing universal capabilities for integrating and customizing document-driven processes. ReadSoft Service Bus (RSB) adds high customer value to ReadSoft solutions and reduces solution implementation times for custom projects. It is service-orientated, expandable, facilitates easy integration and allows component reuse across multiple systems.

RSB uses adapters to facilitate communication between systems.

- **Source adapters** send data from a source system to RSB.
- **Target adapters** send data from RSB to a target system.

You can combine source and target adapters to connect any system supported by ReadSoft Service Bus.



### 1.1 SAP Target Adapter

The SAP Target Adapter sends documents from RSB to SAP.

### 1.2 Key concepts and features

The SAP Target Adapter:

- Automatically transfers XML documents from RSB to SAP.
- Archives document images using SAP ArchiveLink.
- Provides user exits that allow SAP consultants to perform additional actions on the documents.
- Is quick and easy to set up.

Note: The SAP Target Adapter does not perform document posting in SAP by default; however, this functionality can be implemented by an SAP consultant.

## 1.3 Components

The SAP Target Adapter is a part of a larger solution which includes:

- **A source adapter** – moves files and/or data from the source system to RSB.
- **RSB** – coordinates communication between adapters and transforms electronic invoice data to a common format.

Depending on your source system, you may also require an RSB plugin, such as the ReadSoft Service Bus plug-in for INVOICES or the ReadSoft Service Bus plug-in for FORMS.

- **SAP Target Adapter** – sends documents from RSB to SAP.
- **Adapter RFC** – a custom RFC that must be installed on the SAP system. The required files are included in the setup package of the SAP adapter. By default, the RFC name is `Zrsb_Rfc_Data_Submit`.
- **SAP** – SAP R/3 is supported.
- **ArchiveLink enabled storage** – an archive system that supports the ArchiveLink interface.
- **Other target adapters** (optional) – you can add other target adapters to send invoices data and images to another target system, such as SharePoint.

## 2 Installation

You can install the SAP Target Adapter after you install ReadSoft Service Bus. See the [RSB Installation Guide](#) for more information about installing RSB.

## 3 Configuration

After you install ReadSoft Service Bus and the appropriate adapters, you must configure RSB. The basic steps you perform are:

1. [Create a document service](#) to coordinate the transfer of documents.
2. Configure source activity settings, if necessary.
3. [Configure target activity settings](#).

Depending on the source adapter and any additional (optional) target adapters you use, you might also need to configure a RSB plug-in or map fields between your systems. Be sure to check the documentation for your other adapters for more information.

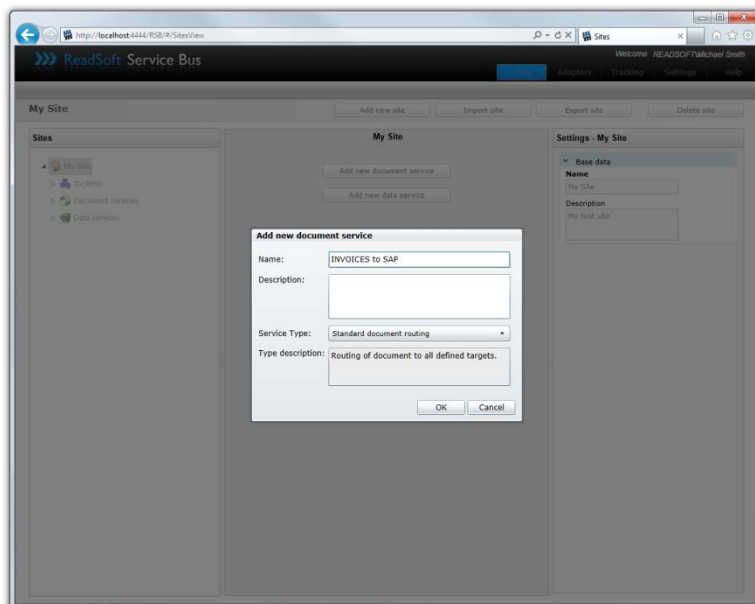
After you complete the configuration, you must activate the document service before you can use it.

## 3.1 Create a document service

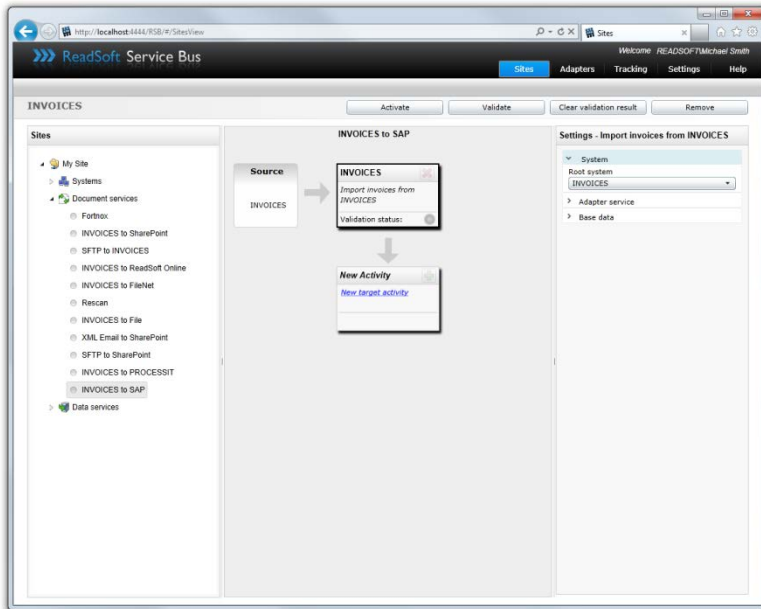
You create a document service and configure the SAP Target Adapter using the RSB administration page.

See Help for more details about the procedures outlined below.

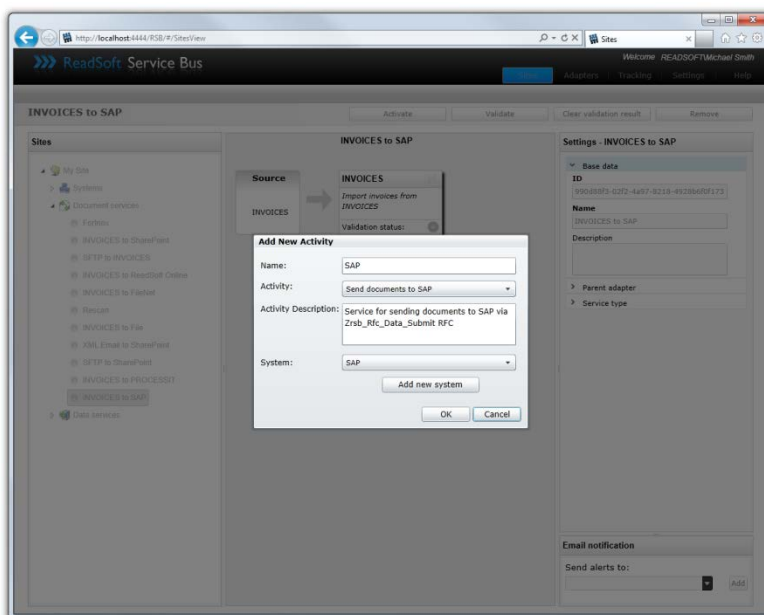
1. Select the **Document services** node and click **Add new document service**.
2. Select **Standard document routing** as the **Service type**.



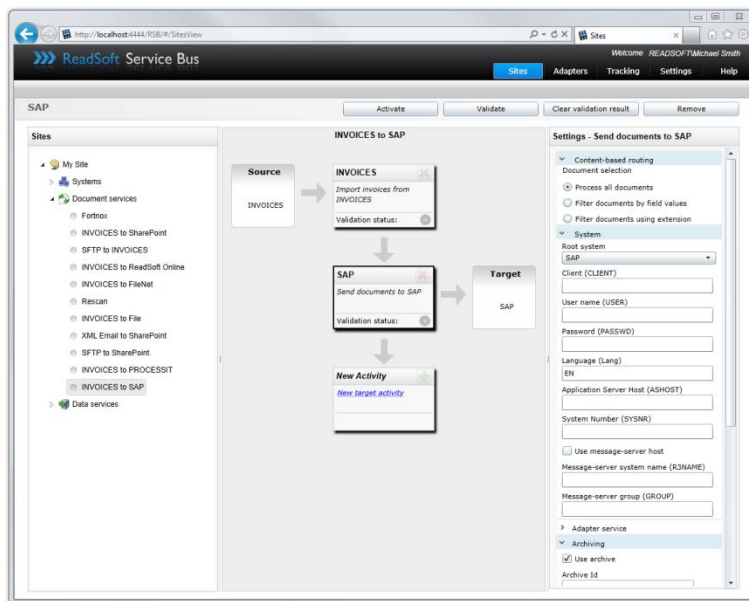
3. Create a new source activity and use the **Activity** setting to specify your source adapter. If there is no **System** to select, click **Add new system** and use the dialog that appears to describe the target system.



4. Create a new target activity and select **Send documents to SAP** as the **Activity**. If there is no **System** to select, click **Add new system** and use the dialog that appears to describe the target system.



5. Configure the target activity settings.



## 3.2 Configure target activity settings

After you create a document service that uses the SAP Target Adapter, there are a few settings you must adjust. Select the target system activity in the design view to view its settings.

Content-based routing	
<b>Process all documents</b>	Process all incoming documents via RSB.
<b>Filter documents by field values</b>	Processes only documents that meet the filter criteria in the list.
<b>Filter documents using extension</b>	Filters documents using the custom extension you specify.
<b>Add</b>	Displays the Add field filter dialog for adding a new field filter (only displayed when Filter documents by field values is selected).
<b>Remove</b>	Removes the selected filter from the list (only displayed when Filter documents by field values is selected).
System	
<b>Root system</b>	Specifies the system (defined in RSB) that the activity uses.
<b>Client (CLIENT)</b>	The SAP client to connect to.
<b>User name (USER)</b>	The user name needed to log in to SAP.



<b>Password (PASSWD)</b>	The password for User name above.
<b>Language (LANG)</b>	The language you use when connecting to SAP.
<b>Application Server Host (ASHOST)</b>	The application server host you use to connect to the target SAP system.
<b>System number (SYSNR)</b>	The system number you use to connect to the target SAP system.
<b>Use message-server host</b>	Determines whether you want use the message-server (load balancing) when logging in to SAP.
<b>Message-server system name (R3NAME)</b>	The SAP R/3 system name. Only used when <b>Use message-server</b> host is selected.
<b>Message-server group (GROUP)</b>	The name of the SAP server group. Only used when <b>Use message-server</b> host is selected.
<b>Archiving</b>	
<b>Use archive</b>	Determines whether to include the image when calling the RFC.
<b>Archive id</b>	The identifier of the archive repository ID to be used. This setting can be ignored by implementing a user exit to determine the setting, or when the configuration of this setting is done inside the configuration table.
<b>Archive doc type</b>	The archive document type to specify when archiving the image. This setting can be ignored by implementing a user exit to determine the setting, or when the configuration of this setting is done inside the configuration table.
<b>Archive source reference</b>	Determines whether references to other files, such as XML and images, are included when calling the RFC.
<b>Source reference archive doc type</b>	Specifies the archive document type when archiving the source reference. This setting can be ignored by implementing a user exit to determine the setting, or when the configuration of this setting is done inside the configuration table.
<b>Source reference archive identification</b>	Specifies the identifier of the archive repository you want to use. This setting can be ignored by implementing a user exit to determine the setting, or when the configuration of this setting is done inside the configuration table.
<b>Mapping</b>	
<b>Edit Map</b>	Displays the Map Designer, which you can use to map fields between the source and target system.

Simulator	
<b>Use simulator</b>	Specifies whether the SAP simulator should be used instead of an actual SAP system.
<b>Simulator URI</b>	The location of the SAP simulator.