

Generic SFTP Target Adapter

For ReadSoft Service Bus

July 2015 – ReadSoft AB



© 2015 Lexmark International Technology, S.A. All rights reserved.

Lexmark is a trademark of Lexmark International, Inc., registered in the U.S. and/or other countries. All other trademarks are the property of their respective owners. No part of this publication may be reproduced, stored, or transmitted in any form without the prior written permission of Lexmark.

1	Overview	4
1.1	Generic SFTP Target Adapter	4
1.2	Key concepts and features	4
1.3	Components.....	5
2	Installation.....	5
3	Configuration	5
3.1	Create a document service	5
3.2	Configure target activity settings.....	7

1 Overview

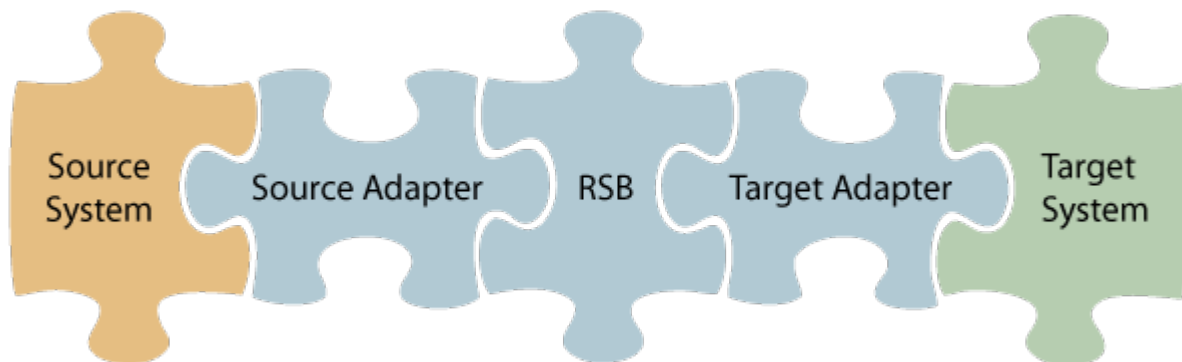
This document describes the Generic SFTP Target Adapter for ReadSoft Service Bus.

ReadSoft Service Bus is an integration platform that extends ReadSoft solutions by providing universal capabilities for integrating and customizing document-driven processes. ReadSoft Service Bus (RSB) adds high customer value to ReadSoft solutions and reduces solution implementation times for custom projects. It is service-orientated, expandable, facilitates easy integration and allows component reuse across multiple systems.

RSB uses adapters to facilitate communication between systems.

- **Source adapters** send data from a source system to RSB.
- **Target adapters** send data from RSB to a target system.

You can combine source and target adapters to connect any system supported by ReadSoft Service Bus.



1.1 Generic SFTP Target Adapter

The Generic SFTP Target Adapter sends documents (files) to a specified folder via SFTP. It can also perform XML transformations on files you specify in the settings. This is useful if you need to transform document data and save it to a folder location without sending the data to a target system.

1.2 Key concepts and features

The Generic SFTP Target Adapter:

- Automatically transfers documents (files) from RSB to a specified folder via SFTP.
- Is quick and easy to set up.

1.3 Components

The Generic SFTP Target Adapter is a part of a larger solution which includes:

- **A source adapter** – moves files and/or data from the source system to RSB.
- **RSB** – coordinates communication between adapters and transforms electronic invoice data to a common format.

Depending on your source system, you may also require an RSB plugin, such as the ReadSoft Service Bus plug-in for INVOICES or the ReadSoft Service Bus plug-in for FORMS.

- **Generic SFTP Target Adapter** – sends files to any folder you specify via SFTP.
- **Other target adapters** (optional) – you can add other target adapters to send invoices data and images to another target system, such as SAP, Open Text or SharePoint.

2 Installation

You can install the Generic SFTP Target Adapter after you install ReadSoft Service Bus. See the [RSB Installation Guide](#) for more information about installing RSB.

3 Configuration

After you install ReadSoft Service Bus and the appropriate adapters, you must configure RSB. The basic steps you perform are:

1. [Create a document service](#) to coordinate the transfer of documents.
2. Configure source activity settings, if necessary.
3. [Configure target activity settings](#).

Depending on the source adapter and any additional (optional) target adapters you use, you might also need to configure a RSB plug-in or map fields between your systems. Be sure to check the documentation for your other adapters for more information.

After you complete the configuration, you must activate the document service before you can use it.

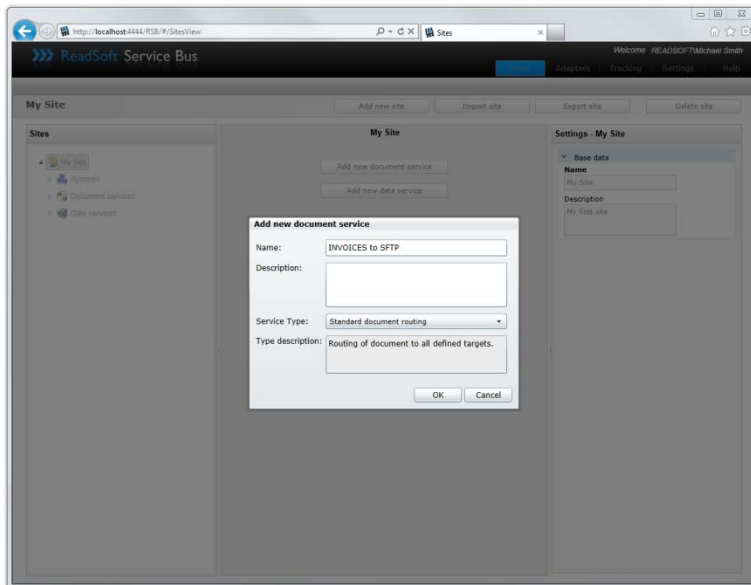
3.1 Create a document service

You create a document service and configure the Generic SFTP Target Adapter using the RSB administration page.

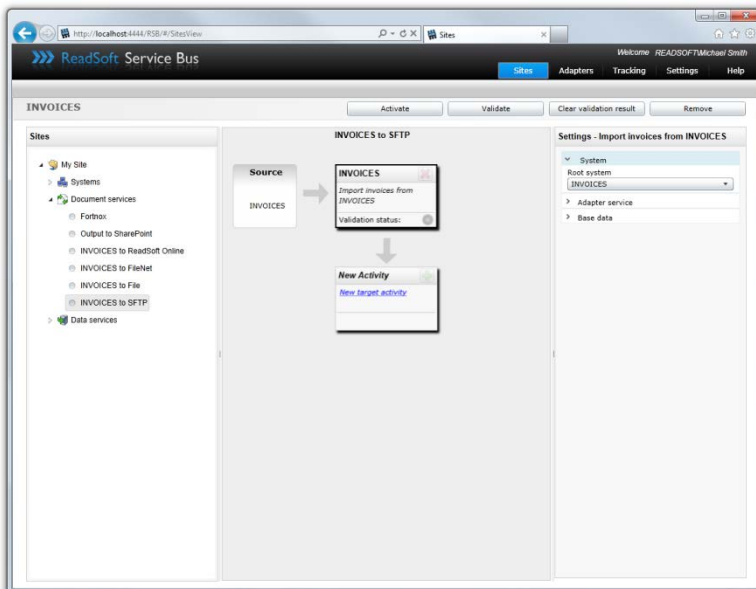
See Help for more details about the procedures outlined below.

1. Select the **Document services** node and click **Add new document service**.

2. Select **Standard document routing** as the **Service type**.

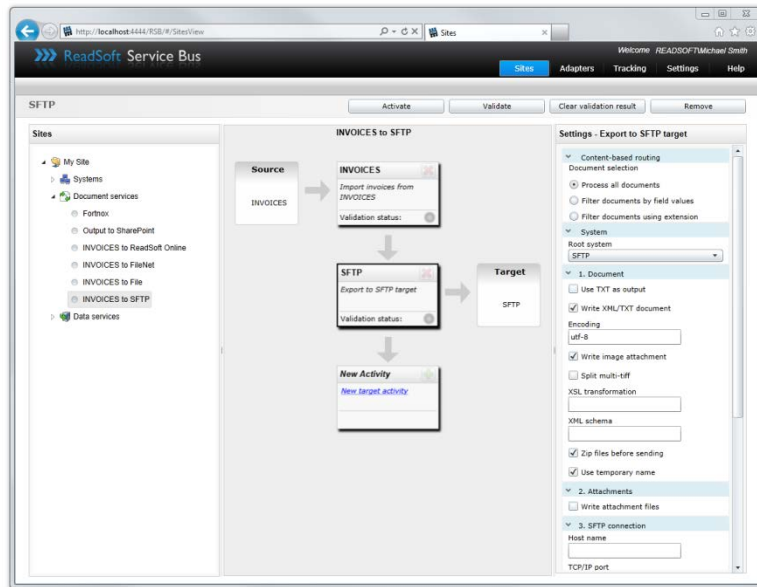


3. Create a new source activity and use the **Activity** setting to specify your source adapter. If there is no **System** to select, click **Add new system** and use the dialog that appears to describe the target system.



4. Create a new target activity and select **Export to SFTP target** as the **Activity**. If there is no **System** to select, click **Add new system** and use the dialog that appears to describe the target system.

5. Specify the **System**, or click **Add new system** and use the dialog that appears to describe the target system.



3.2 Configure target activity settings

After you create a document service that uses the Generic SFTP Target Adapter, there are a few settings you must adjust. Select the target system activity in the design view to view its settings.

Content-based routing	
Process all documents	Process all incoming documents via RSB.
Filter documents by field values	Processes only documents that meet the filter criteria in the list.
Filter documents using extension	Filters documents using the custom extension you specify.
Add	Displays the Add field filter dialog for adding a new field filter (only displayed when Filter documents by field values is selected).
Remove	Removes the selected filter from the list (only displayed when Filter documents by field values is selected).
System	
Root system	Specifies the system (defined in RSB) that the activity uses.
Document	

Write XML document	Writes an XML document to the target folder.
Encoding	Specifies the character encoding of the target XML document (default: utf-8).
Write image attachment	Writes the document image to the target folder.
XSL transformation	The XSLT used to transform the data (optional).
XML schema	The XML files used to validate the XML data (optional).
Attachments	
Write attachment files	Determines whether attachments are written to the target folder.
SFTP connection	
Host name	The IP address or name of the host computer (target system).
TCP/IP port	The TCP/IP port (default:22).
Remote path	The folder where RSB sends the files you want to export.
User name	The login user name for the SFTP server.
Password	The password for the private Key file. The password is not stored on the server or directly transmitted to the server.
Key file	Specifies a PEM file in Open SSH format.
Adapter service	
ID	The name of the system.
Name	The descriptive name given to the adapter. You specify the name yourself when you add the adapter to the routing service.
Description	The description of the adapter. You specify the description yourself when you add the adapter to the routing service.
Class	The class of the adapter.
Service type	The type of service provided (example: Source or Target).
Web-service URI	The URI you can use to access this service via a web application.
Subfolder	

Use dynamic subfolders	<p>Determines whether subfolders are created based on a field value from the document.</p> <p>Example</p> <p>This is useful if you want to group documents in folders by their supplier names. In this case, you specify the XPath of the supplier field (/Document/Invoice/Supplier/Name) in the Dynamic subfolder field box. Then for every document that is exported, RSB will create a subfolder using the value from the supplier field. So all documents from supplier "Abc" are saved in the "Abc" folder, and all documents from supplier "123" are saved in the "123" folder and so on.</p>
Dynamic subfolder field	The XPath of the field that determines the name of the folder.