

# Generic SFTP Input Adapter

For ReadSoft Service Bus

July 2015 – ReadSoft AB



© 2015 Lexmark International Technology, S.A. All rights reserved.

Lexmark is a trademark of Lexmark International, Inc., registered in the U.S. and/or other countries. All other trademarks are the property of their respective owners. No part of this publication may be reproduced, stored, or transmitted in any form without the prior written permission of Lexmark.

1	Overview .....	4
1.1	Generic SFTP Input Adapter .....	4
1.2	Key concepts and features .....	4
1.3	Components.....	5
2	Installation.....	5
3	Configuration .....	5
3.1	Create a document service .....	5
3.2	Configure input activity settings .....	7

## 1 Overview

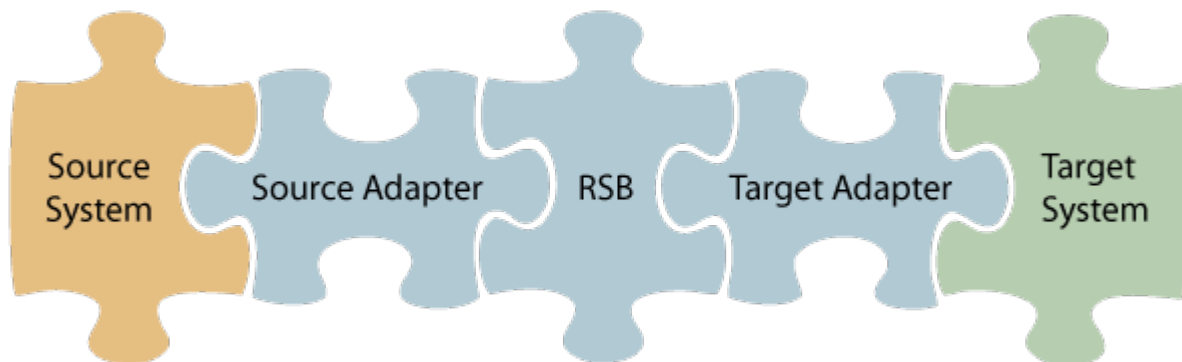
This document describes the Generic SFTP Input Adapter for ReadSoft Service Bus.

ReadSoft Service Bus is an integration platform that extends ReadSoft solutions by providing universal capabilities for integrating and customizing document-driven processes. ReadSoft Service Bus (RSB) adds high customer value to ReadSoft solutions and reduces solution implementation times for custom projects. It is service-orientated, expandable, facilitates easy integration and allows component reuse across multiple systems.

RSB uses adapters to facilitate communication between systems.

- **Source adapters** send data from a source system to RSB.
- **Target adapters** send data from RSB to a target system.

You can combine source and target adapters to connect any system supported by ReadSoft Service Bus.



### 1.1 Generic SFTP Input Adapter

The Generic SFTP Input Adapter sends documents from a source system to RSB via SFTP.

### 1.2 Key concepts and features

The Generic SFTP Input Adapter:

- Automatically transfers documents from a source system to RSB via SFTP.
- Supports field mapping between systems.
- Supports master-data import with INVOICES. See *INVOICES to PROCESSIT Connector – Product description* for more information.
- Is quick and easy to set up.

## 1.3 Components

The Generic SFTP Input Adapter is a part of a larger solution which includes:

- **A source adapter** – moves files and/or data from the source system to RSB.
- **RSB** – coordinates communication between adapters and transforms electronic invoice data to a common format.

Depending on your source system, you may also require an RSB plugin, such as the ReadSoft Service Bus plug-in for INVOICES or the ReadSoft Service Bus plug-in for FORMS.

- **Generic SFTP Input Adapter** – sends documents to PROCESSIT.
- **Other target adapters** (optional) – you can add other target adapters to send invoices data and images to another target system, such as SAP or Open Text.

## 2 Installation

You can install the Generic SFTP Input Adapter after you install ReadSoft Service Bus. See the [RSB Installation Guide](#) for more information about installing RSB.

## 3 Configuration

After you install ReadSoft Service Bus and the appropriate adapters, you must configure RSB. The basic steps you perform are:

1. [Create a document service](#) to coordinate the transfer of documents.
2. [Configure source activity settings](#).
3. Configure target activity settings, if necessary.

Depending on the source adapter and any additional (optional) target adapters you use, you might also need to configure a RSB plug-in or map fields between your systems. Be sure to check the documentation for your other adapters for more information.

After you complete the configuration, you must activate the document service before you can use it.

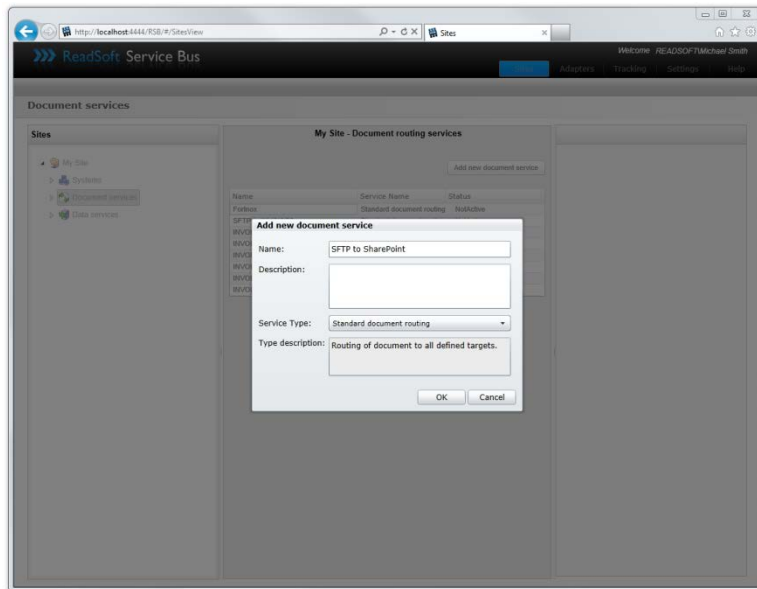
### 3.1 Create a document service

You create a document service and configure the Generic SFTP Input Adapter using the RSB administration page.

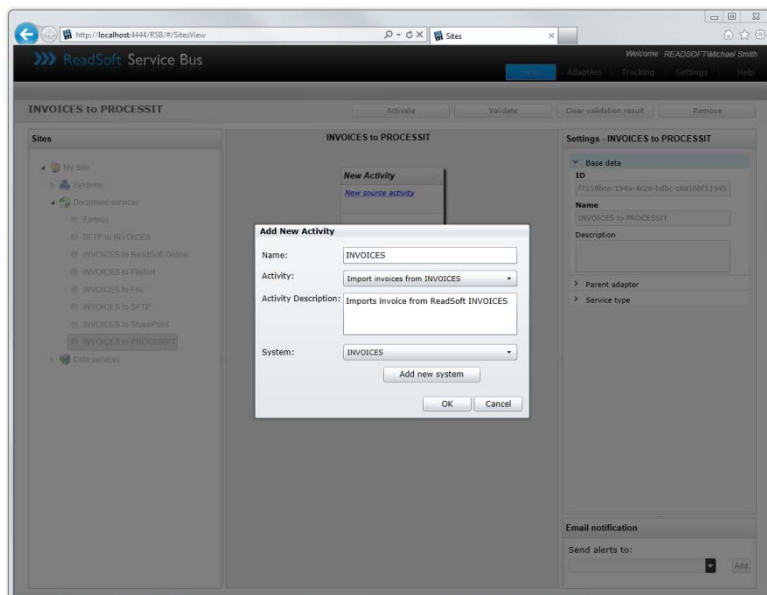
See Help for more details about the procedures outlined below.

1. Select the **Document services** node and click **Add new document service**.

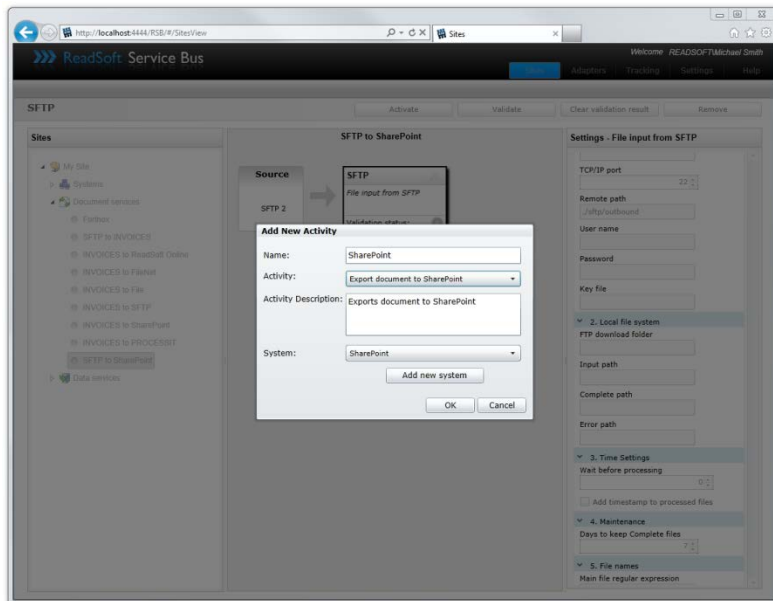
2. Select **Standard document routing** as the Service type.



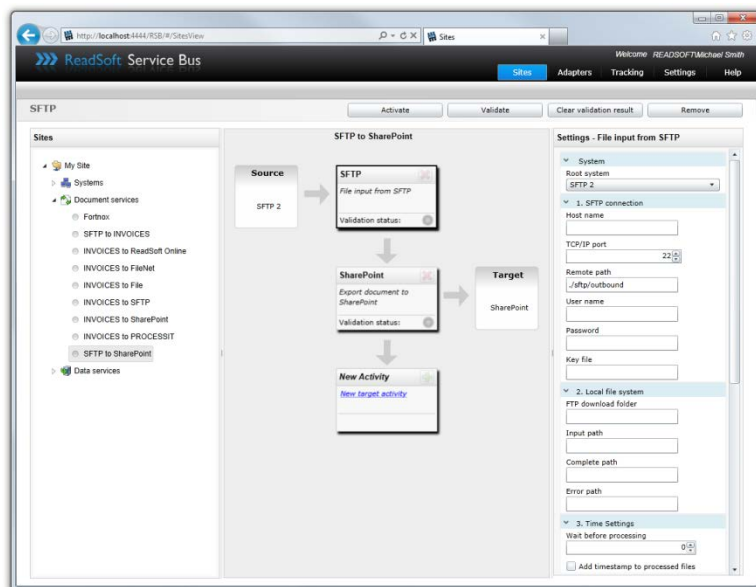
3. Create a new source activity and select **File input from SFTP** as the **Activity**. If there is no **System** to select, click **Add new system** and use the dialog that appears to describe the source system.



4. Create a new target activity and use the **Activity** setting to specify your target adapter. If there is no **System** to select, click **Add new system** and use the dialog that appears to describe the target system.



5. Select the source system in the design area to display and adjust its settings.



## 3.2 Configure input activity settings

After you create a document service that uses the Generic SFTP Input Adapter, there are a few settings you must adjust. Select the target system activity in the design view to adjust its settings.

### System

#### Root system

Specifies the system (defined in RSB) that the activity uses.

SFT connection	
<b>Host name</b>	The IP address or name of the host computer (source system).
<b>TCP/IP port</b>	The TCP/IP port (default: 22).
<b>Database password</b>	The password for <b>Database user name</b> .
<b>Remote path</b>	The folder where RSB can find the files you want to import.
<b>User name</b>	The login user name for the SFTP server.
<b>Password</b>	The password for the private <b>Key file</b> . The password is not stored on the server or directly transmitted to the server.
<b>Key file</b>	Specifies a PEM file in Open SSH format.
Local file system	
<b>FTP download folder</b>	The SFTP adapter downloads files from Remote path to the folder specified here.
<b>Input path</b>	Specifies a folder where you can copy files manually for input. For example, if you want to reprocess files from the Error path, you can move them to the Input path.
<b>Complete path</b>	After a file is successfully transferred, it is moved to the folder specified here.
<b>Error path</b>	If an error occurs during transfer, the file is moved to the folder specified here.
Time settings	
<b>Wait before processing</b>	The number of seconds for the SFTP adapter to wait before downloading a file from the server after the file was last modified.  Timestamps are used to avoid handling files that are still being written.
<b>Add timestamp to processed files</b>	Adds a the date and time to the file name when the file is moved to the <b>Complete path</b> (or the <b>Error path</b> ).
Maintenance	
<b>Days to keep Complete files</b>	Specifies the number of days to keep files in the <i>Complete</i> folder.  Files older than the number of days specified here are deleted during maintenance. Maintenance is performed at the time configured in the <b>Settings</b> view.  During maintenance, alerts are posted if there are files in the <i>Error</i> folder.
File names	



<b>Main file regular expression</b>	Uses an expression to identify the main file from a set of files that are transferred together. Attachments are then located using the value returned from the expression.
<b>Main file is XML</b>	Determines whether the main file is XML, so RSB knows if it can be mapped or transformed.
<b>Image attachment pattern</b>	Specifies the expression to use to find attachment files.
<b>Document attachment pattern</b>	Specifies the expression to use to find document files.
<b>Test settings</b>	
<b>Keep files on SFTP server</b>	Leaves the files on the source system. This setting is helpful when testing the document service.
<b>Scheduling</b>	
<b>Run from</b>	Specifies when to begin accepting input. 24-hour format: HH:MM.
<b>Run to</b>	Specifies when to stop accepting input. 24-hour format: HH:MM.
<b>Interval</b>	Specifies how often documents are retrieved from the source system. Format: HH:MM:SS or HH:MM.