

# Generic File Target Adapter

For ReadSoft Service Bus

July 2015 – ReadSoft AB



© 2015 Lexmark International Technology, S.A. All rights reserved.

Lexmark is a trademark of Lexmark International, Inc., registered in the U.S. and/or other countries. All other trademarks are the property of their respective owners. No part of this publication may be reproduced, stored, or transmitted in any form without the prior written permission of Lexmark.

1	Overview .....	4
1.1	Generic File Target Adapter .....	4
1.2	Key concepts and features .....	4
1.3	Components.....	5
2	Installation.....	5
3	Configuration .....	5
3.1	Create a document service .....	5
3.2	Configure target activity settings.....	7

## 1 Overview

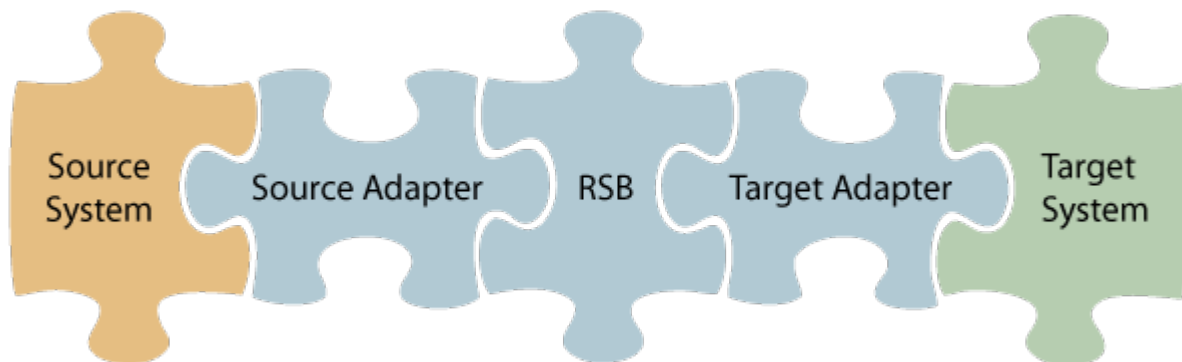
This document describes the Generic File Target Adapter for ReadSoft Service Bus.

ReadSoft Service Bus is an integration platform that extends ReadSoft solutions by providing universal capabilities for integrating and customizing document-driven processes. ReadSoft Service Bus (RSB) adds high customer value to ReadSoft solutions and reduces solution implementation times for custom projects. It is service-orientated, expandable, facilitates easy integration and allows component reuse across multiple systems.

RSB uses adapters to facilitate communication between systems.

- **Source adapters** send data from a source system to RSB.
- **Target adapters** send data from RSB to a target system.

You can combine source and target adapters to connect any system supported by ReadSoft Service Bus.



### 1.1 Generic File Target Adapter

The Generic File Target Adapter simply sends documents (files) to a specified folder. It can also perform XML transformations on files you specify in the settings. This is useful if you need to transform document data and save it to a folder location without sending the data to a target system.

### 1.2 Key concepts and features

The Generic File Target Adapter:

- Automatically transfers documents (files) from RSB to a specified folder. This can be a local folder or a shared folder on the network, for example.
- Is quick and easy to set up.

## 1.3 Components

The Generic File Target Adapter is a part of a larger solution which includes:

- **A source adapter** – moves files and/or data from the source system to RSB.
- **RSB** – coordinates communication between adapters and transforms electronic invoice data to a common format.

Depending on your source system, you may also require an RSB plugin, such as the ReadSoft Service Bus plug-in for INVOICES or the ReadSoft Service Bus plug-in for FORMS.

- **Generic File Target Adapter** – sends files to any folder you specify that RSB has access to. This can be a local folder or a shared folder on the network, for example.
- **Other target adapters** (optional) – you can add other target adapters to send invoices data and images to another target system, such as SAP, Open Text or SharePoint.

## 2 Installation

You can install the Generic File Target Adapter after you install ReadSoft Service Bus. See the [RSB Installation Guide](#) for more information about installing RSB.

## 3 Configuration

After you install ReadSoft Service Bus and the appropriate adapters, you must configure RSB. The basic steps you perform are:

1. [Create a document service](#) to coordinate the transfer of documents.
2. Configure source activity settings, if necessary.
3. [Configure target activity settings](#).

Depending on the source adapter and any additional (optional) target adapters you use, you might also need to configure a RSB plug-in or map fields between your systems. Be sure to check the documentation for your other adapters for more information.

After you complete the configuration, you must activate the document service before you can use it.

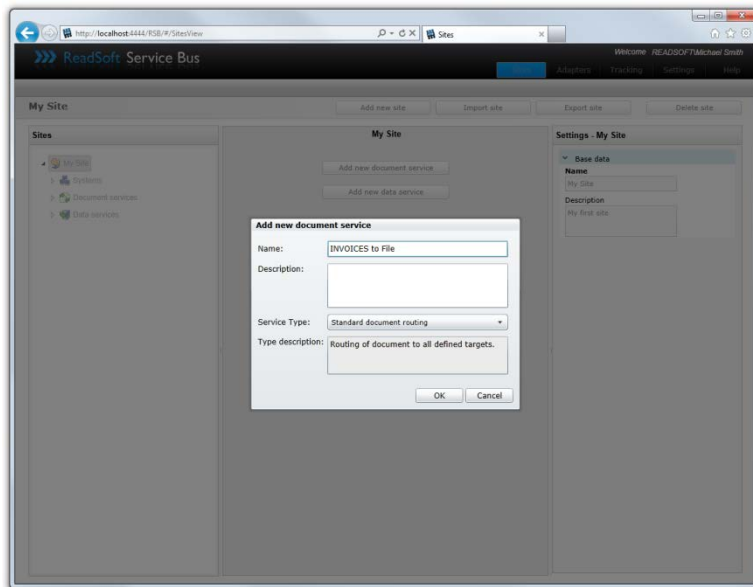
### 3.1 Create a document service

You create a document service and configure the Generic File Target Adapter using the RSB administration page.

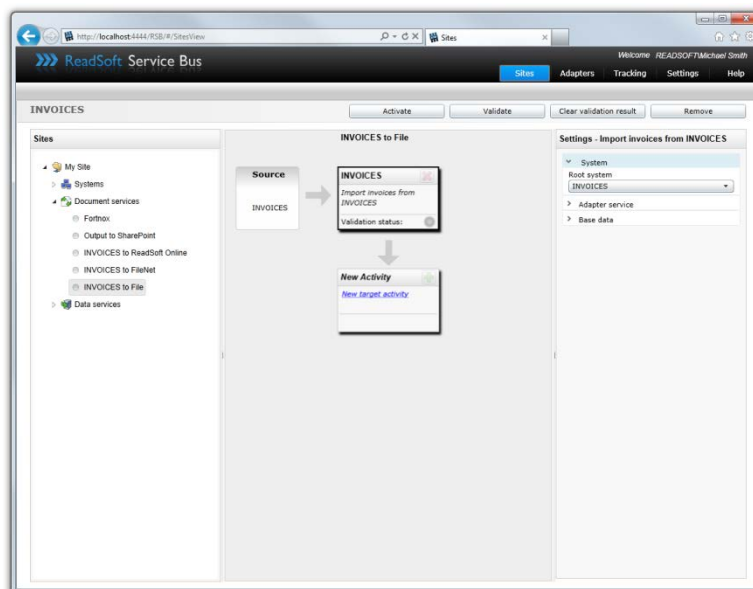
See Help for more details about the procedures outlined below.

1. Select the **Document services** node and click **Add new document service**.

2. Select **Standard document routing** as the **Service type**.

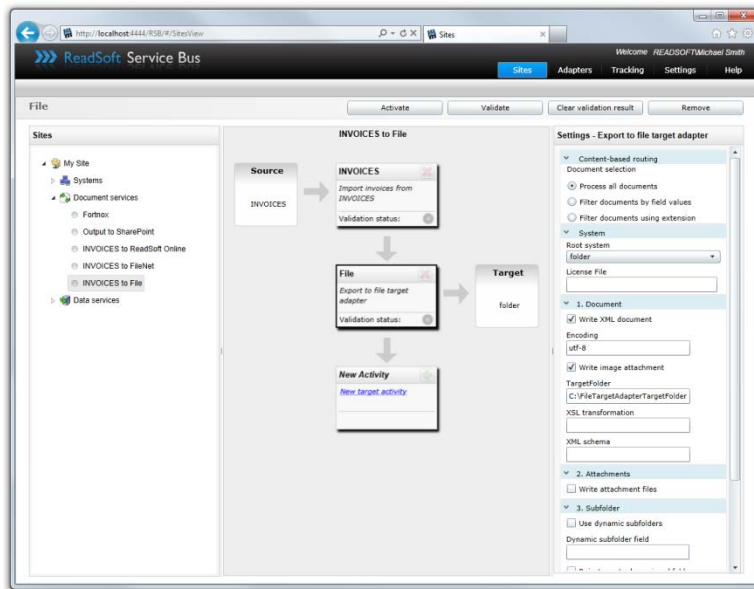


3. Create a new source activity and use the **Activity** setting to specify your source adapter. If there is no **System** to select, click **Add new system** and use the dialog that appears to describe the target system.



4. Create a new target activity and select **Export to file target adapter** as the **Activity**. If there is no **System** to select, click **Add new system** and use the dialog that appears to describe the target system.

5. Specify the **System**, or click **Add new system** and use the dialog that appears to describe the target system.



## 3.2 Configure target activity settings

After you create a document service that uses the Generic File Target Adapter, there are a few settings you must adjust. Select the target system activity in the design view to view its settings.

Content-based routing	
<b>Process all documents</b>	Process all incoming documents via RSB.
<b>Filter documents by field values</b>	Processes only documents that meet the filter criteria in the list.
<b>Filter documents using extension</b>	Filters documents using the custom extension you specify.
<b>Add</b>	Displays the Add field filter dialog for adding a new field filter (only displayed when Filter documents by field values is selected).
<b>Remove</b>	Removes the selected filter from the list (only displayed when Filter documents by field values is selected).
System	
<b>Root system</b>	Specifies the system (defined in RSB) that the activity uses.
<b>Document</b>	

<b>Write XML document</b>	Writes an XML document to the target folder.
<b>Encoding</b>	Specifies the character encoding of the target XML document (default: utf-8).
<b>Write image attachment</b>	Writes the document image to the target folder.
<b>Target folder</b>	The folder where the XML files are written.
<b>XSL transformation</b>	The XSLT used to transform the data (optional).
<b>XML schema</b>	The XML files used to validate the XML data (optional).
<b>Attachments</b>	
<b>Write attachment files</b>	Determines whether attachments are written to the target folder.
<b>Subfolder</b>	
<b>Use dynamic subfolders</b>	Determines a subfolder based on a field value in the document.
<b>Dynamic subfolder field</b>	The XPath of the field that determines the subfolder name.
<b>Reject empty dynamic subfolder</b>	Determines whether the document is rejected if no value is found in the Dynamic subfolder field.
<b>Maintenance</b>	
<b>Check for old files in Target folder</b>	Determines whether the maintenance job alerts administrators to old files that remain in the <b>Target folder</b> .
<b>Maximum days in Target folder</b>	If <b>Check for old files in Target folder</b> is selected, the maintenance alerts administrators if are found in the <b>Target folder</b> that are older than the number of days you specify here.
<b>Adapter service</b>	
<b>ID</b>	The name of the system.
<b>Name</b>	The descriptive name given to the adapter. You specify the name yourself when you add the adapter to the routing service.
<b>Description</b>	The description of the adapter. You specify the description yourself when you add the adapter to the routing service.
<b>Class</b>	The class of the adapter.



<b>Service type</b>	The type of service provided (example: Source or Target).
<b>Web-service URI</b>	The URI you can use to access this service via a web application.
<b>Base data</b>	
<b>Name</b>	The name of the activity. You can change this setting at any time as long as the service is inactive.
<b>Description</b>	A description of the activity. You can change this setting at any time as long as the service is inactive.