

FileNet Target Adapter

For ReadSoft Service Bus

July 2015 – ReadSoft AB



© 2015 Lexmark International Technology, S.A. All rights reserved.

Lexmark is a trademark of Lexmark International, Inc., registered in the U.S. and/or other countries. All other trademarks are the property of their respective owners. No part of this publication may be reproduced, stored, or transmitted in any form without the prior written permission of Lexmark.

1	Overview	4
1.1	FileNet Target Adapter	4
1.2	Key concepts and features	4
1.3	Components.....	5
1.4	Supported systems.....	5
2	Installation.....	5
3	Configuration	5
3.1	Create a document service	6
3.2	Configure target activity settings.....	7

1 Overview

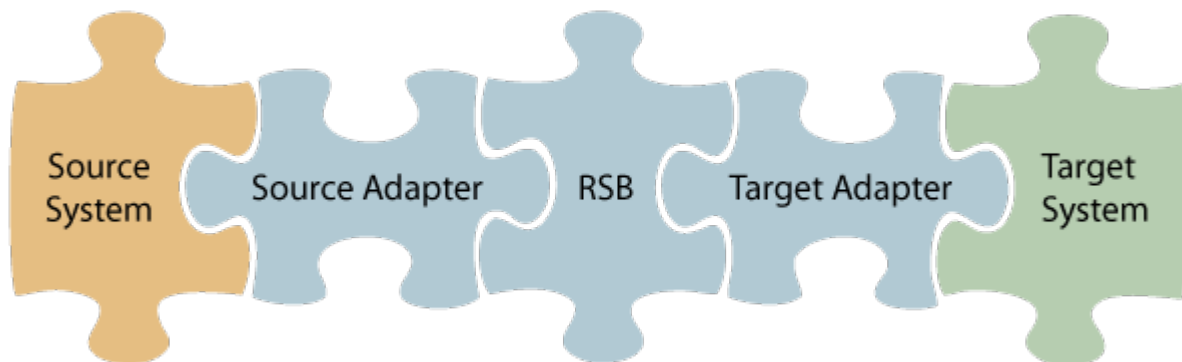
This document describes the FileNet Target Adapter for ReadSoft Service Bus.

ReadSoft Service Bus is an integration platform that extends ReadSoft solutions by providing universal capabilities for integrating and customizing document-driven processes. ReadSoft Service Bus (RSB) adds high customer value to ReadSoft solutions and reduces solution implementation times for custom projects. It is service-orientated, expandable, facilitates easy integration and allows component reuse across multiple systems.

RSB uses adapters to facilitate communication between systems.

- **Source adapters** send data from a source system to RSB.
- **Target adapters** send data from RSB to a target system.

You can combine source and target adapters to connect any system supported by ReadSoft Service Bus.



1.1 FileNet Target Adapter

The FileNet Target Adapter transfers documents and data between RSB and a FileNet server. By using FileNet Target Adapter in combination with a source adapter of your choice, you can connect any supported source system with a FileNet system. You can use additional target adapters in combination with the FileNet Target Adapter.

1.2 Key concepts and features

The FileNet Target Adapter:

- Automatically transfers documents from RSB to a FileNet server.
- Returns document URLs to RSB which can be used by other target adapters, so other target systems can access invoice images on FileNet
- Is quick and easy to set up.

1.3 Components

The FileNet Target Adapter is a part of a larger solution which includes:

- **A source adapter** – moves files from the source system to RSB.
- **RSB** – coordinates communication between adapters and transforms electronic invoice data to a common format.

Depending on your source system, you may also require an RSB plugin, such as the ReadSoft Service Bus plug-in for INVOICES or the ReadSoft Service Bus plug-in for FORMS.

- **FileNet Target Adapter** – sends invoice image files to FileNet.
- **Other target adapters** (optional) – you can add other target adapters to send invoices data and images to another target system, such as SAP, Open Text or SharePoint.

1.4 Supported systems

The following systems are supported:

- The FileNet P8 platform.

2 Installation

You can install the FileNet Target Adapter after you install ReadSoft Service Bus. See the [RSB Installation Guide](#) for more information about installing RSB.

3 Configuration

After you install ReadSoft Service Bus and the appropriate adapters, you must configure RSB. The basic steps you perform are:

1. [Create a document service](#) to coordinate the transfer of documents.
2. Configure source activity settings, if necessary.
3. [Configure target activity settings](#).

Depending on the source adapter and any additional (optional) target adapters you use, you might also need to configure a RSB plug-in or map fields between your systems. Be sure to check the documentation for your other adapters for more information.

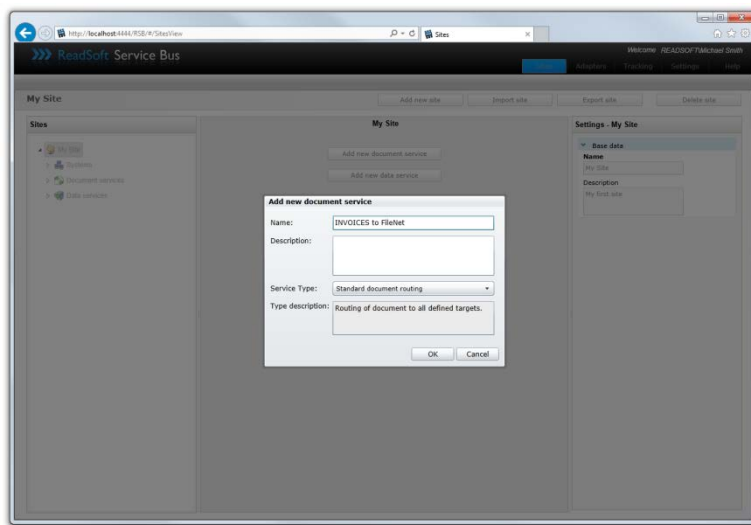
After you complete the configuration, you must activate the document service before you can use it.

3.1 Create a document service

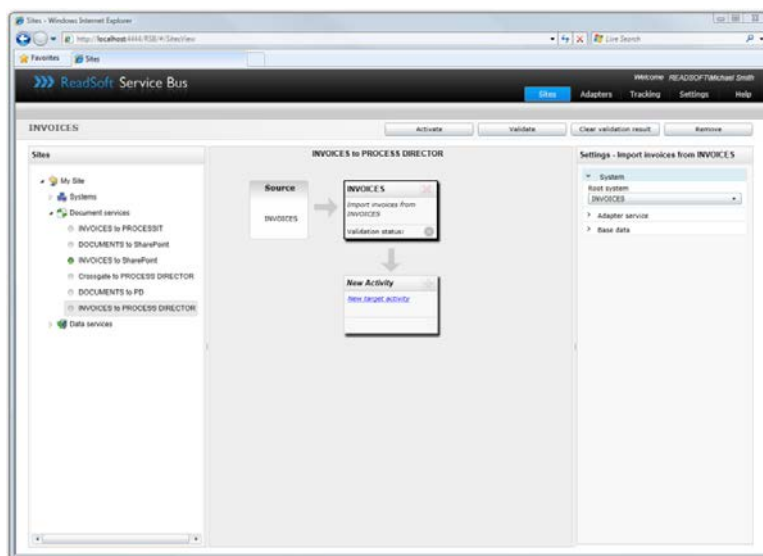
You create a document service and configure the FileNet Target Adapter using the RSB administration page.

See Help for more details about the procedures outlined below.

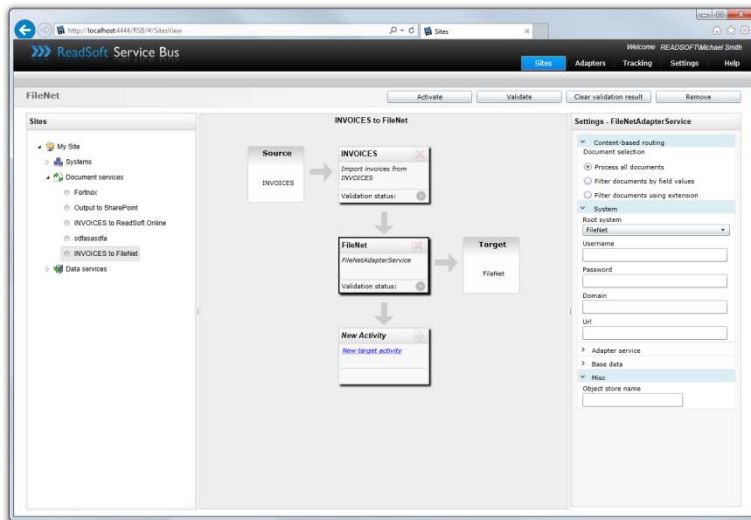
1. Select the **Document services** node and click **Add new document service**.
2. Select **Standard document routing** as the **Service type**.



3. Create a new source activity and use the **Activity** setting to specify your source adapter. If there is no **System** to select, click **Add new system** and use the dialog that appears to describe the target system.



4. Create a new target activity and select **Export to FileNet** as the **Activity**. If there is no **System** to select, click **Add new system** and use the dialog that appears to describe the target system.
5. Specify FileNet as the **System**. If you have not specified the FileNet system yet, click **Add new system**, and use the dialog that appears to specify the FileNet system.



3.2 Configure target activity settings

After you create a document service that uses the FileNet Target Adapter, there are a few settings you must adjust. Select the target system activity in the design view to view its settings.

Content-based routing	
Process all documents	Process all incoming documents via RSB.
Filter documents by field values	Processes only documents that meet the filter criteria in the list.
Filter documents using extension	Filters documents using the custom extension you specify.
Add	Displays the Add field filter dialog for adding a new field filter (only displayed when Filter documents by field values is selected).
Remove	Removes the selected filter from the list (only displayed when Filter documents by field values is selected).
System properties	
User name	The user name required to access FileNet.

Content-based routing	
Process all documents	Process all incoming documents via RSB.
Filter documents by field values	Processes only documents that meet the filter criteria in the list.
Filter documents using extension	Filters documents using the custom extension you specify.
Add	Displays the Add field filter dialog for adding a new field filter (only displayed when Filter documents by field values is selected).
Remove	Removes the selected filter from the list (only displayed when Filter documents by field values is selected).
System properties	
Password	The password for User name .
Domain	The domain in FileNet.
URL	The URL that is required to connect to FileNet.
Document properties	
Object store name	The name of the stored object in FileNet.