



Crossgate to PROCESS DIRECTOR Connector

Product Description

July 2015 – ReadSoft AB

© 2015 Lexmark International Technology, S.A. All rights reserved.

Lexmark is a trademark of Lexmark International, Inc., registered in the U.S. and/or other countries. All other trademarks are the property of their respective owners. No part of this publication may be reproduced, stored, or transmitted in any form without the prior written permission of Lexmark.

27072015.0942

Contents

Overview	4
The Crossgate to PROCESS DIRECTOR Connector	4
Key concepts and features	4
Components	5
Supported systems	5
Integration project outline	6
Communication requirements	6
Security	6
Installation	7
Prerequisites and troubleshooting	7
Configuration	8
Create a document service	8
Configure Source and Target activities	10
Map fields	10
References	12

Overview

This document describes the *Crossgate to PROCESS DIRECTOR Connector* for ReadSoft Service Bus.

ReadSoft Service Bus is an integration platform that extends ReadSoft solutions by providing universal capabilities for integrating and customizing document-driven processes. ReadSoft Service Bus (RSB) adds high customer value to ReadSoft solutions and reduces solution implementation times for custom projects. It is service-orientated, expandable, facilitates easy integration and allows component reuse across multiple systems.



RSB uses *connectors* to facilitate communication between systems.

The Crossgate to PROCESS DIRECTOR Connector

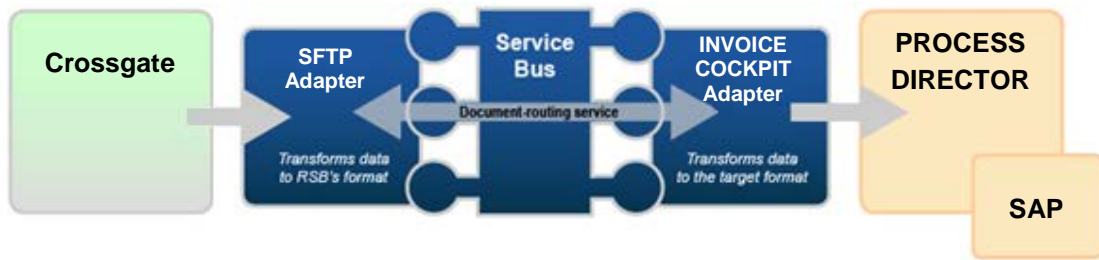
The Crossgate to PROCESS DIRECTOR Connector takes electronic invoice files in an XML format (such as INVOIC0X) from a Crossgate SFTP server, creates invoices in PROCESS DIRECTOR for Accounts Payable and archives the files using the standard facilities of PROCESS DIRECTOR.

Key concepts and features

The Crossgate to PROCESS DIRECTOR Connector:

- Automatically transfers invoices from Crossgate to PROCESS DIRECTOR for Accounts Payable.
- Provides centralized document-tracking and troubleshooting functions.
- Is quick and easy to set up.

Components



The flow of information for the document-routing service.

The **Crossgate to PROCESS DIRECTOR Connector** is composed of the following parts:

- **Generic SFTP adapter** – moves files from Crossgate to RSB.
- **RSB** - coordinates communication between adapters and transforms electronic invoice data to a format suitable for PROCESS DIRECTOR.
- **INVOICE COCKPIT adapter** - sends invoice data and image files to PROCESS DIRECTOR.

Supported systems

The following systems are supported:

- SFTP access to the Crossgate Business Integration Platform
- PROCESS DIRECTOR 7.1 or later, with PROCESS DIRECTOR for Accounts Payable.
- INVOICE COCKPIT 3.1 or later (these are previous versions of PROCESS DIRECTOR for Accounts Payable).

Integration project outline

In order to integrate successfully with the Crossgate Business Integration Platform over SFTP, there are a few important steps that should be followed.

Communication requirements

To establish communication over SFTP, RSB must have a private (secret) key that corresponds to a public key installed on the Crossgate server. RSB also needs to know which servers to contact and what user name to use.

- Generate private and public keys. See *Guide for implementing an SFTP connection to the Business Ready Network*, a Crossgate document included with the installation.
- Send the public key to Crossgate according to instructions you receive from Crossgate. When Crossgate receives the public key, they can configure their servers to grant access to your private key.
- Make sure you obtain a user name, server addresses and information about the FTP folder structure from Crossgate.
- After Crossgate configures their servers to allow access using your private key, verify that it is possible to establish a connection with the SFTP servers using a standard client such as WinSCP or PSFTP.
- You are now ready to configure RSB for retrieving documents from the SFTP servers.

Security

During testing, it can be difficult to maintain the security of the private key, since you may want to email it between computers or even between companies. After testing, it is good practice to generate a new private and public key pair at the site where RSB is installed, and send the public key to Crossgate before the integration goes live. After Crossgate installs the key on their servers, you can quickly configure the key in the SFTP source adapter.

Installation

The Crossgate to PROCESS DIRECTOR Connector installation installs the ReadSoft Service Bus and adapters for communication with the systems involved. The software can be installed on any computer with network access to the Crossgate Business Integration Platform SFTP server in and the SAP system where PROCESS DIRECTOR or INVOICE COCKPIT runs.

Prerequisites and troubleshooting

For more information on how to install an RSB Connector, please refer to the RSB Installation Guide.

Configuration

After you install ReadSoft Service Bus and the appropriate adapters, you must configure RSB. The basic steps you perform are:

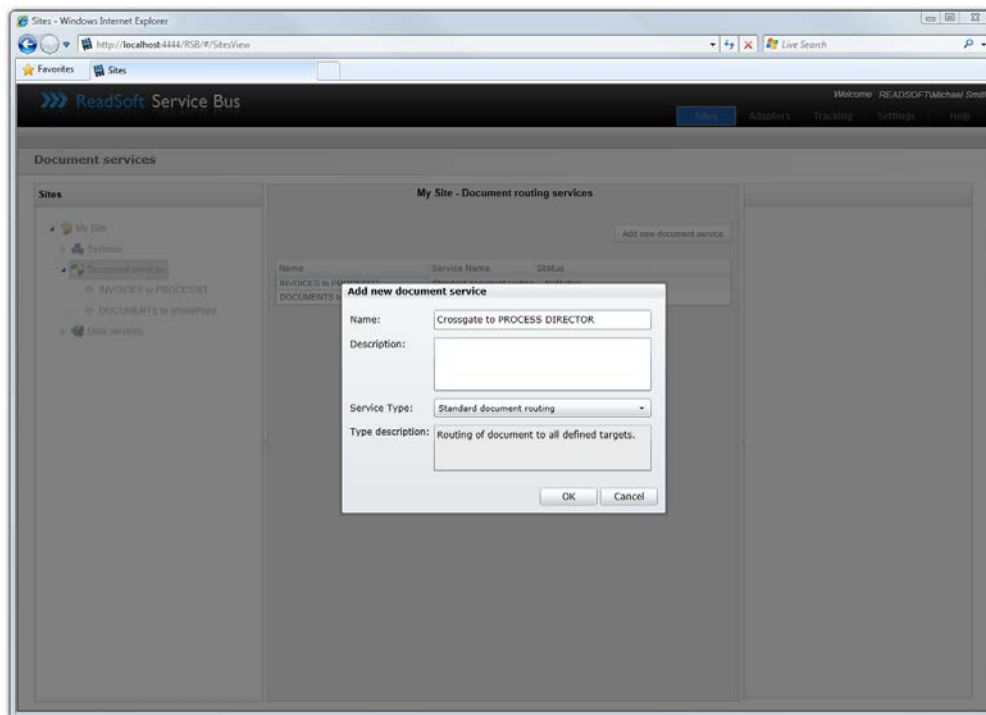
1. Create a document service to coordinate the transfer of documents.
2. Configure source and target activities according to the systems involved.
3. Map fields between the systems.
4. Configure error reporting and logging.

Create a document service

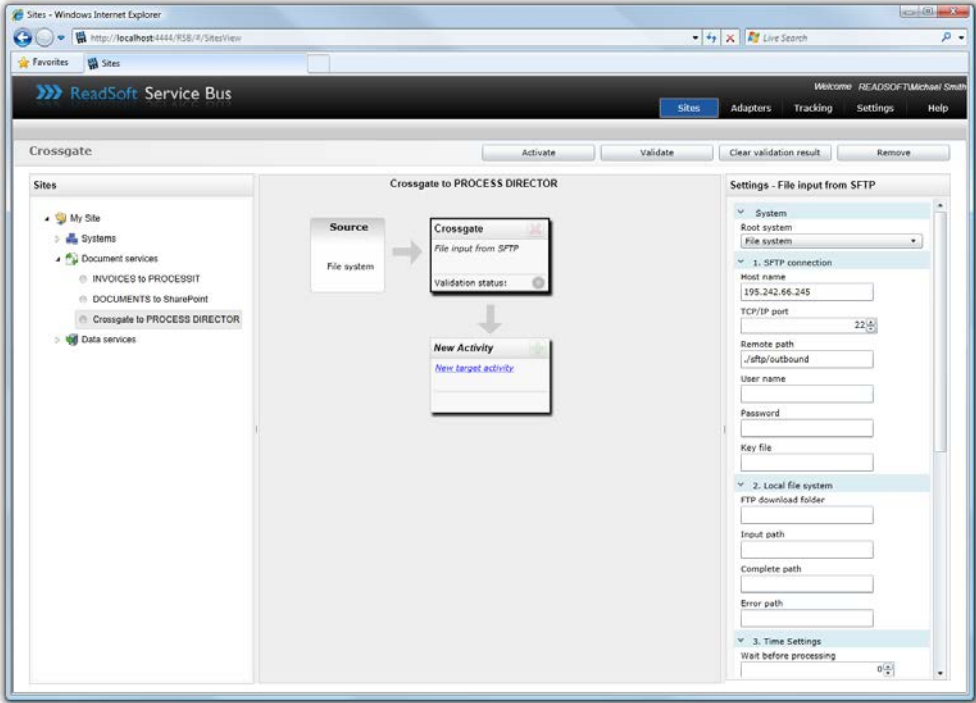
You configure the Crossgate to PROCESS DIRECTOR Connector using the RSB administration page.

See Help for more details about the procedures outlined below.

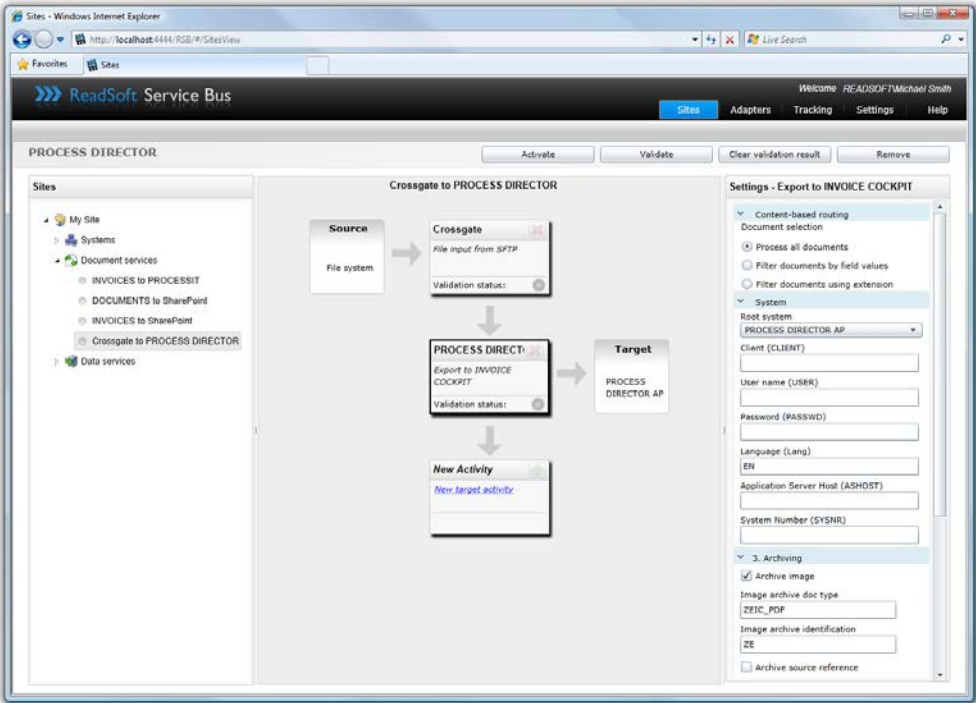
1. Select the **Document services** node and click **Add new document service**.
2. Select **Standard document routing** as the **Service type**.



3. Create a new source activity and select **Import invoices from INVOICES** as the **Activity**.



4. Create a new target activity and select **Export to INVOICE COCKPIT** as the **Activity**.



5. Configure the source and target activities.

6. [Map fields](#) between Crossgate and PROCESS DIRECTOR.

The activity is now ready for use in the service. Be sure to activate the service configuration before you use it.

Configure Source and Target activities

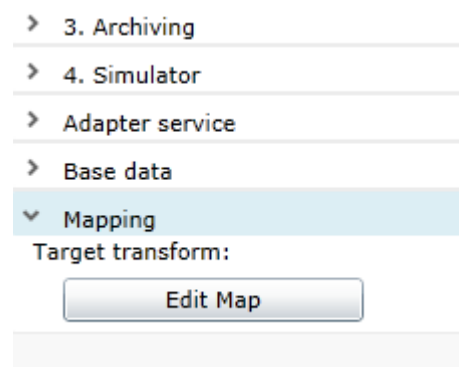
1. Select the Crossgate input activity you created and adjust its settings. Some of the settings specify access to the SFTP server using information obtained from Crossgate. See [Help](#) for more details about other settings.
2. Select the PROCESS DIRECTOR activity you created and adjust the **System** settings. These settings specify how to connect to PROCESS DIRECTOR (or INVOICE COCKPIT, depending on software versions).

Map fields

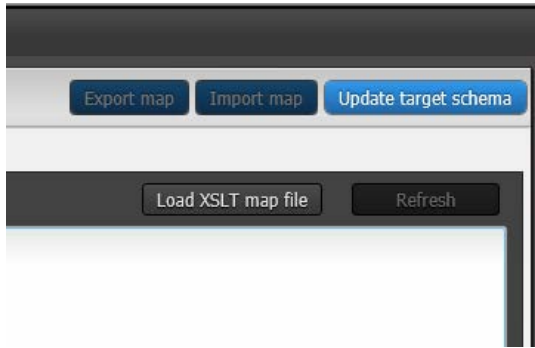
When you map fields for the Crossgate to PROCESS DIRECTOR Connector, you create an XSL transform that tells RSB how to convert the e-invoice format to a format PROCESS DIRECTOR can understand.

See [Help](#) for more details about the procedure below.

1. Select the PROCESS DIRECTOR activity in the design area.
2. Click **Edit map (Mapping settings)** to display the **Map Designer** dialog.



3. Click **Load XSLT map file** to load a file with a suitable XSL transform. If you use XML IDOC files in INVOIC02 format, you can use the file, `INVOIC02 to COCKPIT.xslt`, which is included in the installation. You should modify the file according to the particular mapping needs of your project.



4. After you adjust the transform, click **Update target schema**. This provides the PROCESS DIRECTOR adapter with information about which fields are available in the target system, in order to move documents correctly.
 5. Click **OK** to save the settings.
- ⓘ If your mapping does not behave as expected, you may need to click **Update target schema**. You must update the target schema every time the fields available in SAP have changed.

References

Guide for implementing an SFTP connection to the Business Ready Network, Erich Pollak
(Crossgate AG)

RSB – Installation Guide, ReadSoft AB