

Kofax Kapow

Installation Guide

Version: 10.3.0.1

Date: 2018-05-18



© 2018 Kofax. All rights reserved.

Kofax is a trademark of Kofax, Inc., registered in the U.S. and/or other countries. All other trademarks are the property of their respective owners. No part of this publication may be reproduced, stored, or transmitted in any form without the prior written permission of Kofax.

Table of Contents

Introduction	4
Getting Help for Kofax Products.....	4
Chapter 1: System Requirements	6
Supported Platforms.....	7
Chapter 2: Install Kapow	13
Install on Windows.....	13
Install the Device Automation Service.....	14
Install on Linux.....	15
Silent Installation on Windows.....	16
Important Folders in Kapow.....	17
Chapter 3: Provide License Information	19
License Keys.....	19
Concurrent Robot Execution License.....	20
Kapow Compute Units.....	20
Enter License in Design Studio.....	21
Chapter 4: Kapow Initial Configuration	24
Chapter 5: Upgrade Kapow	25
Upgrade From Assisted Entry to Manual Entry.....	25
Upgrade a RoboServer Service Installation.....	28
Upgrade from Version 9.3-9.5.....	28
Customers Upgrading From 9.2.....	29
Chapter 6: Quick Start Guide	30
Install the software.....	30
Start the Management Console and RoboServer.....	30
Access Management Console and enter the license key.....	31
Configure Management Console settings.....	31
Management Console with authentication.....	32
Configure Management Console before running robots.....	33
Build Robots.....	35
Upload Robots.....	35
Run robots.....	36
Performance graphs in Management Console.....	36

Introduction

This guide helps you install Kofax Kapow in a development environment. For installation in a production environment see the Administration Guide. This guide covers both [interactive](#) and "silent" installation of Kofax Kapow on Windows, as well as normal and "headless" installation on [Linux](#).

For production environment, Kofax strongly recommends deploying the Management Console on a stand-alone Tomcat server. This recommendation is based on, but not limited to the following.

- Derby is used as a system database in embedded mode, which is not recommended for production environment.
- A Management Console on Tomcat:
 - Can use an enterprise class database for improved performance and data security.
 - Can Integrate with LDAP.
- Tomcat can be configured to customer requirements.

Before installing Kapow, you must decide whether to install the 32-bit or the 64-bit version. The key issues to consider are:

- Your operating system may only support one of the versions. 64-bit Windows supports both. On Linux only 64-bit version is supported.
- The 64-bit version is mainly useful on servers where you want to run RoboServer that uses significant RAM. (You will need to configure the allowed amount of RAM after installation, as described in the "Changing the RAM Allocation" section in the *Administrator's Guide*).

This guide describes:

- How to install Kapow, either interactively or "silently" (without user interaction).
- How to enter license information so that you can start Kapow.
- How to configure Kapow.
- How to set up Kapow server applications to start automatically when the computer restarts.
- How to upgrade from earlier versions.

Getting Help for Kofax Products

Kofax regularly updates the Kofax Support site with the latest information about Kofax products.

To access some resources, you must have a valid Support Agreement with an authorized Kofax Reseller/ Partner or with Kofax directly.

Use the tools that Kofax provides for researching and identifying issues. For example, use the Kofax Support site to search for answers about messages, keywords, and product issues. To access the Kofax Support page, go to www.kofax.com/support.

The Kofax Support page provides:

- Product information and release news
Click a product family, select a product, and select a version number.
- Downloadable product documentation
Click a product family, select a product, and click **Documentation**.
- Access to product knowledge bases
Click **Knowledge Base**.
- Access to the Kofax Customer Portal (for eligible customers)
Click **Account Management** and log in.

To optimize your use of the portal, go to the Kofax Customer Portal login page and click the link to open the *Guide to the Kofax Support Portal*. This guide describes how to access the support site, what to do before contacting the support team, how to open a new case or view an open case, and what information to collect before opening a case.

- Access to support tools
Click **Tools** and select the tool to use.
- Information about the support commitment for Kofax products
Click **Support Details** and select **Kofax Support Commitment**.

Use these tools to find answers to questions that you have, to learn about new functionality, and to research possible solutions to current issues.

Chapter 1

System Requirements

The tables below provide system specification for different platforms. The requirements may depend on the application, so these should only be taken as guidelines and not as absolute numbers. The recommendations for servers are for one server. The number of servers used for a given application (the size of a cluster) is a completely different matter and should be estimated using methods described elsewhere.

IDE requirements:

	Minimum	Recommended
Windows	Intel Core Duo 1.8 GHz CPU (or AMD equivalent), 4GB RAM, 1GB free disk space for installation and 5GB free disk space for operation	Intel Core Duo 2.66 GHz CPU (or AMD equivalent), 8GB RAM, 1GB free disk space for installation and 5GB free disk space for operation
Linux (64-bit)	Intel Core Duo 1.8 GHz CPU (or AMD equivalent), 4GB RAM, 1GB free disk space for installation and 5GB free disk space for operation	Intel Core Duo 2.66 GHz CPU (or AMD equivalent), 8GB RAM, 1GB free disk space for installation and 5GB free disk space for operation

Server requirements:

	Minimum	Recommended
Windows (32-bit)	Intel Xeon L5520 CPU (or equivalent AMD Opteron), 2GB RAM, 500MB free disk space for installation and 5GB free disk space for operation	Intel Xeon X5680/X5677 CPU (or equivalent AMD Opteron), 8GB RAM, 500MB free disk space for installation and 5GB free disk space for operation
Windows (64-bit)	Intel Xeon L5520 CPU (or equivalent AMD Opteron), 4GB RAM, 500MB free disk space for installation and 5GB free disk space for operation	Intel Xeon X5680/X5677 CPU (or equivalent AMD Opteron), 8GB RAM, 500MB free disk space for installation and 5GB free disk space for operation
Linux (64-bit)	Intel Xeon L5520 CPU (or equivalent AMD Opteron), 4GB RAM, 500MB free disk space for installation and 5GB free disk space for operation	Intel Xeon X5680/X5677 CPU (or equivalent AMD Opteron), 8GB RAM, 500MB free disk space for installation and 5GB free disk space for operation

Real-time data: If you have a solution where users are waiting for results in real-time, CPU speed is normally the bottleneck, and you should buy the fastest CPU available for your hardware platform.

Dedicated hardware: For best performance, we recommend that you always run RoboServer on dedicated hardware. That means that you should not run database servers and other services on the same hardware as your RoboServer.

Supported Platforms

This is the list of supported platforms. Kofax Kapow was tested on the listed versions. To determine if Kapow works on a version that is not listed, contact Kofax for more information.

IDE Platforms	
Windows	Windows Server 2008 R2, Windows Server 2012, Windows Server 2012 R2, Windows Server 2016, Windows 7, Windows 8.1, Windows 10
Linux (64-bit)	CentOS/Red Hat Enterprise Linux 6.x and 7.x Ubuntu 14.04 LTS with <code>libqt5webkit5</code> library

Server Platforms	
Windows	Windows Server 2008 R2, Windows Server 2012, Windows Server 2012 R2, Windows Server 2016
Linux (64-bit)	CentOS-7, Red Hat Enterprise Linux 6.x and 7.x, Debian 8.2

Linux installation dependencies

The minimal Linux installation must include the following packages to be able to run Robots created with default browser engine.

- `libX11.so.6`
- `libGL.so.1`
- `libXext.so.6`

To use cross-platform authentication (Negotiate and NTLM protocols), your Linux installation must include Generic Security Service API (GSS-API) libraries:

- `libgssapi_krb5.so.2`
- `libgssapi.so.4`
- `libgssapi.so.2`
- `libgssapi.so.1`

Use the `yum install` or `sudo apt-get` command to install necessary libraries on a Linux platform.

You must also install fonts on a headless Linux server for the webkit robots to work.

- [Instructions for installing fonts for CentOS / RedHat](#)
- [Instructions for installing fonts for Ubuntu](#)

Databases	
Oracle*	Version 11g, 12c Requires Unicode and case sensitivity. For case-sensitive comparison, ensure that NLS_COMP is set to BINARY.
IBM DB2	9.7
Microsoft SQL Server	Version 2012, 2014, and 2016
Sybase*	Adaptive Server Enterprise 15.5 using the jConnect for JDBC 3.0 version 6.05 driver
MySQL*	Version 5.5-5.7

* Be aware that loss of data may occur when storing data in Oracle, Sybase or MySQL. On Oracle, an empty string is converted to null. On Sybase, an empty string is converted to " " (a single space). On MySQL, millisecond precision is lost when storing dates. For details, see the ObjectKey Caveats section in the Storing Data in Databases topic in the Kapow help.

Note Microsoft SQL Server with Windows Authentication cannot be used as a logging (logdb) database.

Oracle Connection URL must use `${ServerName}:${Schema}`. Using `${ServerName}:${ServiceName}` is not supported.

You can use PostgreSQL database only for storing your data. PostgreSQL cannot be used as a Management Console system, logging, or audit database.

APIs	
Java	Java 8 including J2EE servers such as Oracle WebLogic 11, IBM WebSphere, and JBOSS
JMX	Java 1.6
.NET	C#, .NET Version 4.0

Note For correct display of data in the Kofax Insight Dashboard, make sure Java correctly sets the time according to your time zone on RoboServers and computers running Management Consoles. See the *Timezone Data Versions in the JRE Software* on the Oracle web site for the latest updates in time zones. If necessary, use the *Timezone Updater Tool* to update the time zone information.

Management Console Portals	
Tomcat	Version 7.0.63 or later. Minimum Java version 1.8 with the latest update.

Other Supported Technologies	
Supported browsers for Management Console and KappZone/Kapplets	Internet Explorer version 9, 10, and 11; Chrome version 58 and later; Firefox version 54 and later; Safari version 10.
Supported JMS message brokers	Apache ActiveMQ 5.11, 5.12, 5.13, 5.14; Red Hat JBoss A-MQ 6.2.1.

Device Automation requirements and prerequisites

Device Automation Platforms	
Windows	Windows 7, Windows 8.1, Windows 10 (64-bit), Windows Server 2008, Windows Server 2012, Windows Server 2016

Device Automation on Windows

If you get the error: "Module automationnative not found," install the following update.

<https://support.microsoft.com/en-us/kb/2999226>

On some systems Windows Update is not available, but there is a workaround to install updates.

1. Create a `c:\temp\976571` folder.
2. Use the following command to extract the contents of the MSU file:

```
Expand -F:* c:\kb976571\Windows6.1-KB976571-v2-x64.msu c:\temp\976571
```

This command extracts multiple files, from `Windows6.1-KB976571-v2-x64.cab`.
3. Run the following command:

```
DISM.exe /Online /Add-Package /PackagePath:c:\temp\976571\Windows6.1-KB976571-v2-x64.cab
```

For more information, see *How to use DISM to install a hotfix from within Windows* on the Microsoft Technet website <https://blogs.technet.microsoft.com>.

The following sections list components that must be installed and configured on the Automation Devices (remote computers you want to automate) before you can use Device Automation feature in Kofax Kapow.

Java Access Bridge

To automate Java programs or Java applets on remote devices with Kofax Kapow, install Java 32-bit on your device (JRE or JDK) and enable the Java Access Bridge in the Java Runtime Environment used by the application. We recommend using the latest available Java version.

For JRE 7 or Later

To enable Java Access Bridge for Java version 7 or later, navigate to the `bin` directory in the Java installation directory and run the following command.

```
jabswitch -enable
```

For JRE6

Follow this procedure to install Java Access Bridge 2.0.2 on a Windows 32-bit system. For older applications that require Java version 1.6, copy the following files to the specified destination directories, where `%WINDOUSHOME%` is the directory where Microsoft Windows is installed (for example, `C:\WINDOWS`), and `%JAVAHOME%` is the directory where your JDK or JRE is installed. The following are examples of directory names for Java SE 6 Update 24.

- JDK: `C:\Program Files\Java\jdk1.6.0_24\jre`
- JRE: `C:\Program Files\Java\jre6`

The following table lists Java Access Bridge Windows libraries and related files for Windows 32-bit systems.

Java Access Bridge File	Destination Directory
<code>WindowsAccessBridge.dll</code>	<code>%WINDOUSHOME%\SYSTEM32</code>

Java Access Bridge File	Destination Directory
JavaAccessBridge.dll	%JAVAHOME%\bin
JAWTAccessBridge.dll	%JAVAHOME%\bin
accessibility.properties	%JAVAHOME%\lib
access-bridge.jar	%JAVAHOME%\lib\ext
jaccess.jar	%JAVAHOME%\lib\ext

For more information, search the Downloads page on the Oracle web site (<http://www.oracle.com/technetwork/java/javase/downloads/>) to locate and download jab-2-0-2. For installation instructions, see installing-jab-32-bit on the <http://docs.oracle.com> website.

Perform the following to test that you have installed Java Access Bridge properly.

1. Run the SwingSet2 application and then run the JavaMonkey.exe application.
2. Select **File > Refresh Tree** in the Java Monkey application and the SwingSet2 application should appear.

Alternatively, you can use the JavaFerret.exe application.

Requirements for Linux-based platforms

To use Device Automation, install the `libxslt1.1` package.

To use built-in browser in Device Automation, install the following packages.

- Ubuntu-based distributions
 - gconf-service
 - libasound2
 - libatk1.0-0
 - libc6
 - libcairo2
 - libcups2
 - libdbus-1-3
 - libexpat1
 - libfontconfig1
 - libgcc1
 - libgconf-2-4
 - libgdk-pixbuf2.0-0
 - libglib2.0-0
 - libgtk2.0-0
 - libnspr4
 - libnss3
 - libpango-1.0-0
 - libpangocairo-1.0-0
 - libx11-xcb1
 - libxcb1

- libxcomposite1
- libxcursor1
- libxdamage1
- libxfixed3
- libxi6
- libxrandr2
- libxrender1
- libxss1
- libxtst6
- Xvfb
- Distributions based on Red Hat and CentOS
 - libX11-xcb.so.1
 - libfontconfig.so.1
 - libpango-1.0.so.0
 - libpangocairo-1.0.so.0
 - libcairo.so.2
 - libXcomposite.so.1
 - libXcursor.so.1
 - libXdamage.so.1
 - libXfixes.so.3
 - libXi.so.6
 - libXrender.so.1
 - libXtst.so.6
 - libXrandr.so.2
 - libXss.so.1
 - libgconf-2.so.4
 - libgio-2.0.so.0
 - libasound.so.2
 - libcups.so.2
 - libdbus-1.so.3
 - libatk-1.0.so.0
 - libgtk-x11-2.0.so.0
 - libgdk-x11-2.0.so.0
 - libgdk_pixbuf-2.0.so.0
 - libnspr4.so
 - libnss3.so
 - libnssutil3.so
 - libsmime3.so
 - libexpat.so.1
 - libxcb.so.1

- xorg-x11-server-Xvfb

Prerequisites for Internet Explorer

To automate Internet Explorer using the Device Automation feature, check the following requirements.

- In Internet Explorer 7 and higher on Windows 7, set the same value (either On or Off) in the Protected Mode settings for each zone. To open the Protected Mode settings in Internet Explorer, select **Tools > Internet options** and click the **Security** tab. For each zone, select the **Enable Protected Mode** option and select the same security level.
- For IE 10 and higher, disable the Enhanced Protected Mode in the Security settings on the Advanced tab of the Internet Options window.
- For IE 11 only, check that a `FEATURE_BFCACHE` subkey with a `DWORD` value named `iexplore.exe` is present in the registry on the target computer. This subkey enables the driver to maintain a connection to the instance of Internet Explorer it creates. For 32-bit Windows, examine the `HKEY_LOCAL_MACHINE\SOFTWARE\Microsoft\Internet Explorer\Main\FeatureControl\FEATURE_BFCACHE` key in the registry editor. For 64-bit Windows, examine the `HKEY_LOCAL_MACHINE\SOFTWARE\Wow6432Node\Microsoft\Internet Explorer\Main\FeatureControl\FEATURE_BFCACHE` key. If the `FEATURE_BFCACHE` subkey is not present, create it and create a `DWORD` value named `iexplore.exe` with the value "0" in the key.
- Set the browser zoom level to 100% to align the native mouse events with the correct coordinates.

Note In some cases, out-of-browser Silverlight applications can interfere with Device Automation. The cause of the problem is the Internet Explorer subdriver. To disable the IE subdriver, clear the **Extended Internet Explorer Support** option on the **Windows** tab of the Device Automation Service configuration window.

SAP prerequisites

To automate SAP application using the Device Automation feature, enable scripting on both the server and the client sides.

- On the client, go to **SAP GUI Options** and enable scripting. Also, turn off notifications, because they interrupt the automation process.
- To enable scripting on the SAP server, perform the following steps. Note that you must have administrative privileges to change the `sapgui/user_scripting` parameter.
 1. Log on to your SAP server.
 2. Run transaction RZ11. Specify the parameter name `sapgui/user_scripting` and click **Display**. If `Parameter name is unknown` appears in the status bar, this indicates that you are missing the current support package. Check your installed packages.
 3. Change the value to `TRUE`.
 4. Click **Save**.

Note that some elements, such as scroll bars, are only available if you run the SAP client on a machine with a Windows Classic desktop theme.

Chapter 2

Install Kapow

This chapter describes how to install Kofax Kapow on a single computer in a developer setup. See the Administration Guide for installation and deployment in a production environment.

For the Windows platform, Kofax Kapow has four installers that install different parts of the software:

- Kapow Design Studio installer: Installs Design Studio and documentation (including SQL scripts for database tables), but does not install RoboServer, Management Console or API. Use this installer if you have a central Management Console/License Server and need a separate copy of Design Studio.
- Kapow RoboServer installer: Installs RoboServer only and does not install Management Console, Design Studio, documentation, or API. This installer is useful, if you need to set up dedicated RoboServer machines.
- Configurable full Kapow installer: Installs all the components, or you can select which ones to install.
- Kapow Device Automation installer: Installs Device Automation Agent to automate remote devices.

The three limited installers can be run using the silent installation process. If you run a silent installation of the full installer, you get the typical install. See [Silent Installation on Windows](#) for details.

For Linux, Kapow provides a full installer as well as RPM and DEB packages for installing RoboServer as a service. See [Install on Linux](#) for details.

Upgrading from Earlier Versions

In the interest of stability, different versions of Kofax Kapow may be installed side by side on the same computer without interfering with each other (except that they must be configured to use different port numbers for the Management Console if run simultaneously). This means that you can install a newer version and get acquainted with it while still doing your daily work with the older version.

You can copy important data such as uploaded robots, execution schedules and so on from one version of Management Console to another by making a backup of the old installation and "restoring" it into the new one. Making a backup varies in different versions of Kofax Kapow, so check help or User's Guide to learn how to create a backup.

Install on Windows

The full Kapow installer provides the following installation options. Optional items are listed with an asterisk.

- Design Studio: Installs Design Studio and its required components
- RoboServer: Installs RoboServer
 - Embedded Management Console: Installs components needed to run an embedded Management Console on the RoboServer

- Management Console: Creates the WAR file for manual installation of the Management Console
- Documentation: Installs documentation (including the SQL script files)
- API*: Installs necessary API components

The following files install separate Kapow components.

If you are installing Design Studio only, download and save the `Kapow_DesignStudio_10.3.0.1_x32.msi` or `Kapow_DesignStudio_10.3.0.1_x64.msi` file to your hard disk. After the download is completed, run the file to start the installation and follow the installer prompts.

To install a RoboServer, download and save the `Kapow_RoboServer_10.3.0.1_x32.msi` or `Kapow_RoboServer_10.3.0.1_x64.msi` file to your hard disk. After the download is completed, run the file to start the installation and follow the installer prompts.

To install the Device Automation Service, download and save the `Kapow_DeviceAutomation_10.3.0.1_x32.msi`. After the download is completed, run the file on the computer you want to automate and follow the installer prompts. For more information, see [Install the Device Automation Service](#).

As another option, you can use the [silent installation](#) to automate the installation process.

Note You need administrator rights to install Kapow on Windows.

Install the Device Automation Service

To install the Device Automation Service, download and save the `Kapow_DeviceAutomation_10.3.0.1_x32.msi` file to your hard disk. After the download is completed, run the file on the computer you want to automate to start the installation. The Device Automation Service is installed in autostart mode. Note that you do not need to install the Device Automation Service to automate terminals.

Important The Device Automation Service version must match the version of other Kapow components, such as Design Studio and Management Console.

Install Components for Device Automation Service

Device Automation Service is designed to automate any work process involving computer applications on Windows systems. The following components and configuration steps are required for the Device Automation Service to access applications on Windows.

Make sure that the latest Windows operating system updates are installed. For Windows 7, 8, and 8.1, the KB2999226 update is required. If this update is not installed on your system, download it from the Microsoft website and install according to the provided instructions.

To work with Java applications, check the following.

- Install the latest Oracle Java 32-bit (JRE or JDK) that installs the Java Access Bridge 32-bit dlls. The Java applications started by the robots can run in a 64-bit JVM, but the 64-bit installer does not include the 32-bit dlls. If your corporate policy does not allow upgrading the Oracle Java, manually install the files needed for Java Access Bridge support as follows.

Java Access Bridge Installation on Windows 64-bit

1. Ensure JAWS 13 or later is installed on your system. Note that JAWS version 13.0.527 or later is required for Windows 7 64-bit. You can download this component from the Java SE Downloads page <http://www.oracle.com/technetwork/java/javase/downloads/index.html>.
2. Download Java Access Bridge 2.0.2 from the Java Access Bridge download page at the following URL:
<http://www.oracle.com/technetwork/java/javase/downloads/jab-2-0-2-download-354311.html>
3. Extract the Java Access Bridge to a folder in your drive and copy `WindowsAccessBridge-32.dll` to `[WINDOWSHOME]\SYSWOW64`. Where `WINDOWSHOME` is the directory where Microsoft Windows is installed, for example, `C:\WINDOWS`.

Java Access Bridge Installation on Windows 32-bit

1. Ensure JAWS 13 or later is installed on your system. You can download this component from the Java SE Downloads page <http://www.oracle.com/technetwork/java/javase/downloads/index.html>.
2. Download Java Access Bridge 2.0.2 from the Java Access Bridge download page at the following URL:
<http://www.oracle.com/technetwork/java/javase/downloads/jab-2-0-2-download-354311.html>
3. Extract the Java Access Bridge to a folder in your drive and copy `WindowsAccessBridge-32.dll` to `%WINDOWSHOME%\SYSTEM32`. Where `%WINDOWSHOME%` is the directory where Microsoft Windows is installed, for example, `C:\WINDOWS`.

Note For detailed Java Access Bridge installation instructions, see [Installing Java Access Bridge on the Oracle web site](#).

- Enable the Java Access Bridge by selecting the Enable Java Access Bridge option in the **Control Panel > Ease of Access Center > Use the computer without a display** or by running the following command prompt command in the `bin` directory of the Java JRE installation directory:
`jabswitch.exe /enable`.

Install on Linux

Kapow provides two installers:

- A tar.gz file containing all the components.
- Kapow RoboServer installer: Installs the `roboserver` service only.

Full Installation

The installation is performed by extracting the contents of the tar.gz file. In most Linux distributions, this can be done by right-clicking the file and selecting the appropriate extraction option. The file can also be extracted from the command line as follows:

```
$tar xzf Kapow_10.3.0.1_x64.tar.gz
```

Alternatively, to extract the file to a specific directory, use the following command:

```
$tar xzf Kapow_10.3.0.1_x64.tar.gz -C /destination_directory
```

When the file is extracted, run the following commands under user with root privileges. The commands help to manage chrome-sandbox file permissions and set the creator and owner of chrome-sandbox as root and enable SUID mode.

- `chown root:root chrome-sandbox`
- `chmod 4755 chrome-sandbox`

Proceed to enter license information as described in [Provide License Information](#).

Note You can install Kapow as an unprivileged user on Linux.

Running RoboServer Installer

The RoboServer only installers are created for the deb and rpm packages. The default installation folder for these packages is `/opt/Kapow/`.

Each of the RoboServer packages contains a RoboServer launcher that is used to run RoboServer as a Linux `/etc/init.d` service. This makes it automatically start on system boot.

The packages create a kapow user and group in the system used when running the roboserver `/etc/init.d` service. The configuration files (most importantly `roboserver.settings`) for the RoboServer service are located in the kapow users home directory (`/home/kapow/`) under the hidden directory `.Kapow/<version>`.

The `roboserver.settings` file can also be accessed through `/etc/opt/Kapow/RoboServer.conf`.

To see all available commands, just run RoboServer from `/etc/init.d` without any arguments.

By default, the RoboServer starts with an SSL port listening (the port number is defined in the `roboserver.settings` file). Keep in mind that this is a RoboServer only install; it is not possible for the service to be configured to start a Management Console, such as with the `-MC` parameter, which is done via the full installation of Kapow.

To run `roboserver` as a `init.d` service:

1. Install the RPM or DEB package.
2. Change the roboserver configuration (optional).
3. Run `#service RoboServer start`, or restart the machine to start the service automatically.

Silent Installation on Windows

A silent installer runs without user interaction. This is convenient if, for instance, you need to automate the installation process in a script.

Using Full Installer

To perform a silent installation of Kofax Kapow, run the following command with administrative rights:

```
msiexec /qn /i Kapow_10.3.0.1.msi
```

This installs the program to the default location. To specify another location, use a command as follows:

```
msiexec /qn /i Kapow_10.3.0.1.msi INSTALLDIR="dir"
```


where "dir" is the location where you want to install. For example:

```
msiexec /qn /i Kapow_10.3.0.1.msi INSTALLDIR="C:\Kapow 10.3.0.1 x64\"
```

To specify a file to log the installation process, use the following parameter:

```
msiexec /qn /i Kapow_10.3.0.1.msi /l msilog.txt
```

After installation, proceed to enter license information as described in [Provide License Information](#).

Using Limited Installers

The following are examples of using different installers in silent mode.

```
msiexec /qn /i Kapow_DesignStudio_10.3.0.1.msi
```

```
msiexec /qn /i Kapow_RoboServer_10.3.0.1.msi
```

```
msiexec /qb /i Kapow_DeviceAutomation_10.3.0.1_x32.msi
```

Important Folders in Kapow

We recommend that you become familiar with the folders and files described in this section.

Installation Folder

The installation folder is the folder where Kofax Kapow is installed. On Windows, the installation folder defaults to:

```
C:\Program Files\Kofax Kapow 10.3.0.1
```

On Linux it will be a directory named Kapow_10.3.0.1 in the directory where you extracted the archive.

The installation folder contains the following important folders:

bin

Contains all executable programs for Kofax Kapow.

API

Contains files and documentation related to the Kofax Kapow Integration APIs.

lib/jdbc

Contains the installed JDBC database drivers. These drivers are always available in Kofax Kapow applications. Normally, you should manage JDBC drivers as described in the Database Drivers topic in the Management Console section of the online help.

Project Folder

The project folder contains your library of robots and types, as described in the Design Studio topic of the online help. Configure the location of the project folder with the Settings application as described in the Working with Projects and Libraries topic of the Design Studio help. On Windows, the default location is similar to the following, depending on your Windows version:

```
C:\Documents and Settings\username\My Documents\My Robots\10.3.0.1
```

```
C:\Users\username\Documents\My Robots\10.3.0.1
```

On Linux the default location of the project directory is:

```
~/Kapow/10.3.0.1
```

The project directory must contain a single subdirectory named Library.

Application Data Folder

The application data folder contains files that are private to the Kofax Kapow but which differ for different users of the same computer. On Windows, the application data folder is (depending on your Windows version):

```
C:\Documents and Settings\ username\Local Settings\Application Data\Kapow
\10.3.0.1
```

```
C:\Users\ username\AppData\Local\Kapow\10.3.0.1
```

On Linux the application data folder is:

```
~/ .Kapow/10.3.0.1
```

To change the location of the application data folder, you can edit the `common.conf` file in the `installation\bin` folder. Add the following two lines:

- `wrapper.java.additional.<NUMBER>=-Dkapow.applicationDataFolder="Folder containing Configuration folder"`
- `wrapper.java.additional.<NUMBER>.stripquotes=TRUE`
Where `<NUMBER>` is a unique integer.

Make sure that the user running Kofax Kapow has read and write access to the folder.

Under normal circumstances, you should never modify or delete files or folders within this folder directly; the GUI tools should be used instead. The application data folder contains the following important folders:

Certificates

Contains the HTTPS certificates known by Kofax Kapow. See the "Certificates" section in the *Administrator's Guide* for more information.

Configuration

Contains configuration files, which are maintained as described in the section [Configuring Kofax Kapow](#).

Data

Contains the embedded Derby database used by the Management Console (except when installed as a web application in a Tomcat web server). See "Management Console on Tomcat" chapter in the *Administrator's Guide*.

DemoDatabase

Contains the Development Database used in the Management Console Beginner Tutorial, and which you can also use in "toy projects" during your introduction to Kofax Kapow.

Logs

Contains log files.

Chapter 3

Provide License Information

The first step after basic installation is to enter license information. The Management Console in Kapow can work in two different ways. In a development environment you enter the development license information in Design Studio. In the enterprise mode a shared Management Console is used as a license server. This chapter provides information about the development environment license. See Administrator's Guide for using the Management Console as a license server in the enterprise environment.

Note that it is not necessary to enter license information in RoboServers, as they automatically receive the necessary license information from Management Console.

To use the Device Automation feature, obtain a separate license for this feature from Kofax.

License Keys

There are three different kinds of license key:

Production key

Permits production use of the Kapow system.

Non-Production key

Permits use of the Kapow system for non-production use like test and staging.

Developer Seat key

A special kind of non-production key that allows you to run all the Kapow programs on your own computer as part of the same installation. There are, however, some performance limitations, as this it intended to be used only for development or as a trial installation.

A license key (no matter which kind) also describes which Kapow features you have, and how many KCUs you have bought. A Developer Seat key always contains 1 KCU, while the two other kinds may contain more.

If you have both a Production key and a Non-Production key, you may install them into the same Kapow system (that is, in the same Management Console). You may also choose to set up one system for each key. In both cases, you need to set up at least two different clusters (either on the single system or one cluster on each of the two systems), configured as Production and Non-Production, respectively. The KCUs in your licenses can then be assigned to these clusters.

Do not use one key in more than one Management Console.

Concurrent Robot Execution License

The Kofax Kapow Concurrent Robot Execution (CRE) licensing centers around a Kapow Robot license, where the Kapow Robot license controls how many robots can execute on a Kapow RoboServer at one time concurrently. For example, if an organization is licensed for five Kapow Robots, then five robots can be executed concurrently.

There is no limit to the number of robots that can be designed and deployed into production, and robots can be as simple or complex as they need to be. For example, a robot can consist of a few or many steps that execute a set of business workflow actions, such as inputting and outputting data, transforming data, writing data to an Excel worksheet or calling a RESTful Service API.

When you add a CRE-based license and you go to the RoboServers tab in the Management Console, you need to assign licenses to a cluster. For example, if you have 9 licenses that you assigned to a cluster and there is one RoboServer in the cluster, the RoboServer can run nine robots. If there are two RoboServers, they can run four robots each, because a CRE license cannot be split. If you start three RoboServers, each can run three robots.

Kapow licensing is available as a perpetual or annual term license. Kapow licensing is independent of the target hardware environment and physical CPUs, and a robot license is not tied to a physical desktop or virtual machine, allowing you the flexibility to choose cloud-based or on-premise, virtualized or physical CPU environments.

Learn more about Kofax Kapow licensing at kofax.com

Kapow Compute Units

Another way to license Kofax Kapow is to use capacity-based pricing based on Kapow Compute Units (KCUs). This pricing model is completely independent of the chosen hardware configuration.

What are KCUs?

A KCU is a Kapow Compute Unit and is defined as a unit of measure for how many operations (or steps) a Kapow RoboServer can perform in one second (and it is unrelated to underlying server capacity).

A step is the smallest unit of action which can be performed within a RoboServer. Examples of steps are, loading a web page, writing a data record to a database, or performing a transformation on a data element.

One KCU represents a total of 5000 KCU points per second. The number of Kapow steps that make up one (1) KCU depends on the type of Kapow steps involved, as each step consumes a different amount of the KCU. The steps are divided into groups the most important groups are listed here:

1. Steps that both do I/O and execute JavaScript, 10000 KCU points, for example, 2 page loads per second with 4 KCUs
2. Steps that do either I/O or execute JavaScript (but not both), 1000 KCU points, for example, 20 Call REST Web Service Steps per second with 4 KCUs
3. Extraction and transformation steps 1 KCU point, for example, 40,000 extract or assign steps per second with 4 KCUs

4. Device Automation step costs 5000 KCU points.
5. Looping in Device Automation costs 5000 KCU points per iteration.

The complete list is available in Design Studio by clicking **Help > Show KCU Information**.

You should have enough CPU power and sufficiently low response time from the source server.

Note We have empirically measured the average page load time on a powerful CPU over the 23000 most visited web sites to 6.7 seconds

The total number of KCUs a robot uses can be seen in the Design Studio Debugger Summary information after running the robot.

Deploying and Assigning KCUs

With KCUs we can deliver the needed computing capacity independent of the target hardware environment and physical CPUs. This allows the flexibility of choosing, cloud-based or on-premise, virtualized or physical CPU environments without the need to control the number of allocated CPUs.

The available KCUs are assigned to the RoboServer Clusters in the Management Console and automatically distributed between the RoboServers available within the Cluster.

Enter License in Design Studio

If Design Studio is not already started, do as follows:

Windows

Use the **Design Studio** item in the Start menu.

To start the Design Studio from the command line, run the following command in the bin subfolder of the installation folder.

```
DesignStudio
```

Linux

Start Design Studio from the command line by launching the `DesignStudio` program in the bin directory under the installation directory (see [Important Folders in Kapow](#)) as follows:

```
$/DesignStudio
```

On the next screen, enter your license information.

DS Enter License Information

kapow
SOFTWARE

Design Studio

Please enter the license information you have received, or the URL of the license server that will provide this information.

Trial License

Name:

E-mail:

Company:

License Key:

Help OK Cancel

You have three choices, depending on what information you have been provided from Kofax Kapow and/or your system administrator:

License Server

If your administrator provided you with the URL to a central license server (Management Console) that administers the license for all Design Studio users, select License Server and enter the URL and credentials for that server. The license server must be running and have available Design Studio seats in order for you to use Design Studio. If your policies forbid storing the license server password, clear the **Remember Password** option and you will have to type your password every time you open the Design Studio.

See the Administrator's Guide for using the Management Console as a license server.

Developer License

The developer license is a combined license key for both Management Console and Design Studio. You can either enter the license key in your local (embedded) Management Console, or use the dialog box in Design Studio. Whenever you start Design Studio, the Management Console will automatically start as well.

Trial License

For the trial license you only need to fill the name, email and company. You do not enter a license key. Design Studio starts without contacting the Management Console and with limited capabilities. This license is intended for short-time use for trial/demonstration purposes.

Normally, Design Studio displays the **Enter License Information** dialog box only the first time it is started. It will, however, display this dialog box again if the license server cannot be contacted because it has been moved, is not running, or is unavailable for another reason.

Chapter 4

Kapow Initial Configuration

After installing Kofax Kapow, configure the installation to suit your needs. Some configuration is done using the Settings application as described in the "RoboServer Configuration" section of the *Administrator's Guide*.

Other configuration tasks, relevant mostly for administrators of the Kofax Kapow system, are done via Management Console, more specifically via the Servers tab, the Projects tab and the Options tab. It is especially important to set up the necessary RoboServers and clusters on the Servers tab. Refer to the *Administrator's Guide* and the Management Console section in the Kapow help for information on Kapow configuration.

Chapter 5

Upgrade Kapow

In the interest of stability, different versions of Kofax Kapow may be installed side by side on the same computer without interfering with each other. This means that you can install a newer version and get acquainted with it while still doing your daily work with the older version. While doing so, you will probably want to open the older version's default robot project in the newer Design Studio. If you save a robot with the newer version, you will not be able to open it with the older version of Design Studio.

Important If you use the API in your Kapow environment, the Java and .NET files must be updated when upgrading Kapow. The new API files are located in the API folder of your Kapow installation folder, such as `C:\Program Files\Kofax Kapow 10.3.0.1 x64\API`.

Below we will list the most important differences between Kofax Kapow versions that you should take into account when upgrading.

Upgrade a RoboServer Service Installation

Read the [Upgrade a RoboServer Service Installation](#) topic if you are upgrading to a newer version of a RoboServer service.

10.2

Version 10.2 of Kapow is backward compatible with 10.1. Your current robots should run in Kapow version 10.2.

10.1

Version 10.1 of Kapow is backward compatible with 10.0. Your current robots should run in Kapow version 10.1. See Changes in Behavior in Kapow Release Notes.

9.7

Version 9.7 of Kapow is backward compatible with 9.6. Your current robots should run in Kapow version 9.7.

9.6

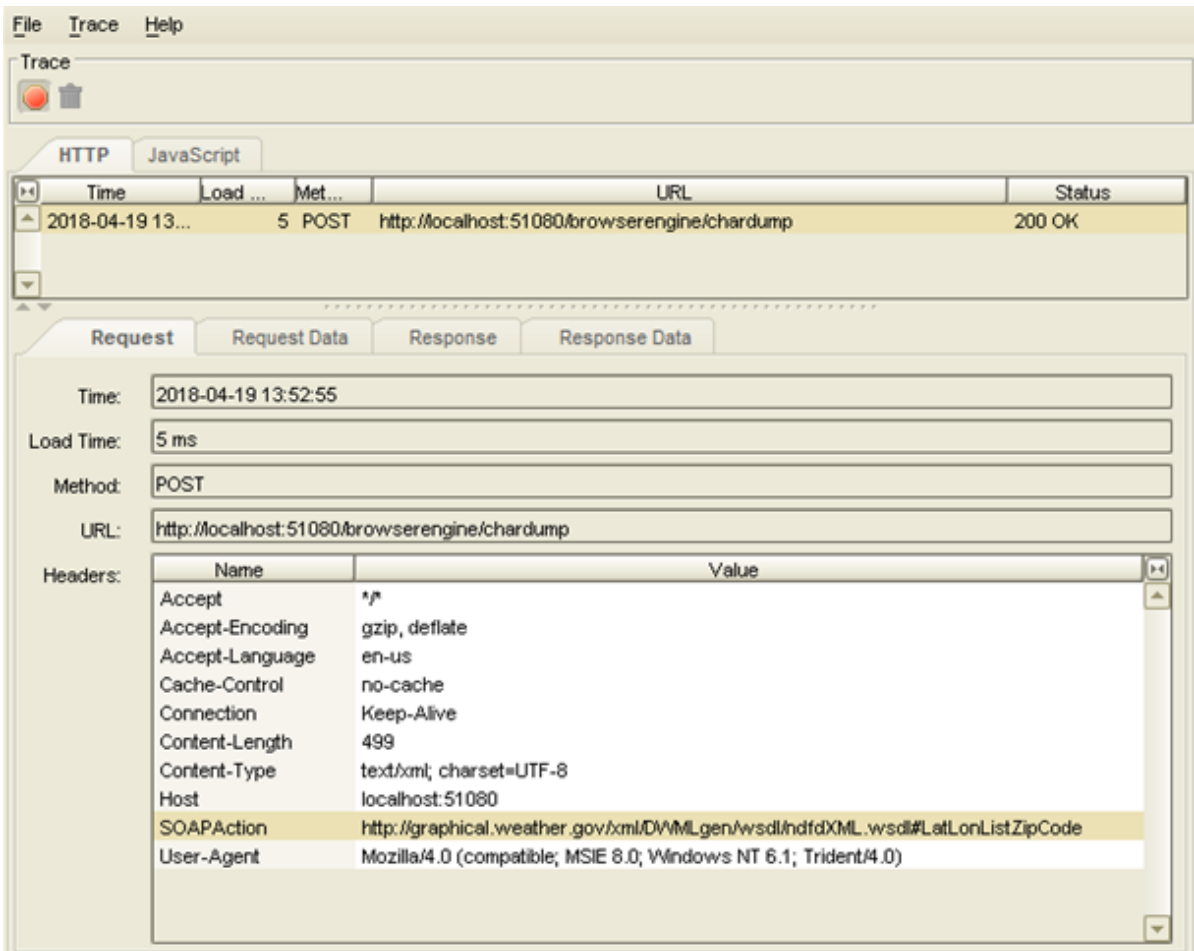
Read [Upgrade from Version 9.3-9.5](#) topic if you are upgrading to Kapow version 9.6.

Upgrade From Assisted Entry to Manual Entry

In Kofax Kapow version 10.3.0.1 the Call SOAP Web Service step does not support Assisted Entry mode. If you are upgrading from an earlier version of Kapow, update the step as described below.

1. Open the robot in an earlier version of Design Studio, for example 10.3.0.0. Create a copy of the robot to ensure that you have a backup and because it is easier to upgrade. In the following steps we will update the step in the copy of the original robot.

2. Open the copy of the robot in Design Studio, execute it to the **Call SOAP Web Service** step, and change the entry mode to **Manual Entry**.
3. Switch to the original robot. Execute to the **Call SOAP Web Service** step. Open the **Browser Tracer** from the **Tools** menu or by pressing F12. In the **Browser Tracer** click the red button to start trace recording.
4. Execute the **Call SOAP Web Service** step by clicking the step after it.
5. If the original step has a specified **Web Service URL**, copy it from the step in the original robot to the step in the updated robot. Otherwise, select the original robot in the editor to ensure that what you see in the Browser Tracer is for that robot. In the Browser Tracer, click the single HTTP event entry, copy the URL, and paste to the **Web Service URL** property of the updated step.
6. In the Browser Tracer, click the single HTTP event entry and find the header property called **SOAPAction** on the Request tab. The Browser Tracer should look similar to the following:



Copy the value of the **SOAPAction** header, switch to the updated robot and paste it to the property called **SOAP Action**. To copy the value, double-click the header in the list and copy its value from the **Show HTTP Header** dialog box.

7. In the Browser Tracer, find the event again, click the Request Data tab, copy the entire text of the request, and paste it to the **SOAP Request** property of the updated step.

8. Ensure that the updated step uses the correct SOAP version by looking at the WSDL file used by the original step. If this WSDL file uses the namespace `http://schemas.xmlsoap.org/wsdl/soap/`, the version is 1.1. If it uses the namespace `http://schemas.xmlsoap.org/wsdl/soap12/`, the version is 1.2.
9. Make sure that **Output**, **Options**, and other properties on the updated step have the same value as on the original one.
10. Test the updated robot, save it. Open it in Kapow 10.3.0.1 and test it.
11. All the previous steps assumed that parameter values in the step are static, that is, do not depend on variables. If parameter values in your step are taken from variables, create the value of the **SOAP Request** property using an expression instead of a static value.
Start by taking a copy of the request. Change the option from **XML** to **XML from Expression** and paste the request into the **Expression** text field. This will produce an expression with an error. You fix this by surrounding it with `>>` and `<<`.

Dynamic property values

All the previous steps assumed that parameter values in the step are static, that is they are hardcoded and do not change during the execution of the robot. If parameter values in your step are taken from variables, create a value of the **SOAP Request** property using an expression instead of a static value.

Start by making a copy of the request. Change the option from **XML** to **XML from Expression** and paste the request into the **Expression** text field. This should produce an expression with an error. Fix it by surrounding the request with double greater-than and less-than signs (`>>` `<<`).

For instance, if the value of the parameter `zipCodeList` is taken from a variable that is also called `zipCodeList`, the SOAP Request surrounded by `>>` `<<` should look as follows (some details are left out).

```
>><?xml version="1.0" encoding="UTF-8"?>
<soapenv:Envelope ...>
  <soapenv:Body>
    <ns1:LatLonListZipCode ...>
      <zipCodeList xsi:type="xsd:string">90210</zipCodeList>
    </ns1:LatLonListZipCode>
  </soapenv:Body>
</soapenv:Envelope><<
```

The value of the `zipCodeList` parameter in the example is static and equals 90210. To use the value of the `zipCodeList` variable instead of the hardcoded value, replace the actual value of the parameter with the variable name in the following format:

```
<< + zipCodeList + >>
```

The code example looks like the following:

```
>><?xml version="1.0" encoding="UTF-8"?>
<soapenv:Envelope ...>
  <soapenv:Body>
    <ns1:LatLonListZipCode ...>
      <zipCodeList xsi:type="xsd:string"><< + zipCodeList + >></zipCodeList>
    </ns1:LatLonListZipCode>
  </soapenv:Body>
</soapenv:Envelope><<
```

Continue this process to replace all parameters with variables.

If a parameter depends on an expression and not just a variable, use that expression instead of the variable. For example, if a parameter depends on the expression `x+1`, replace the value with `<< + (x+1) + >>`.

Upgrade a RoboServer Service Installation

This section provides details about how to upgrade a RoboServer service.

Perform the following steps to upgrade your Linux installation of Kapow.

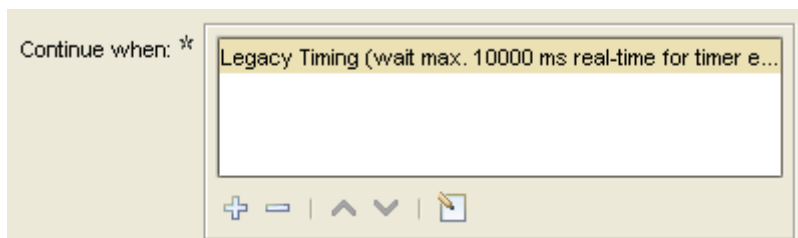
1. Stop the roboserver manually and wait for robots to finish executing (optional).
2. Update the packages.
3. Change the configuration in the new `roboserver.settings` file (optional).
4. Restart the computer or use `RoboServerService start` command to restart the roboserver.

Note the following when upgrading Kapow on Linux:

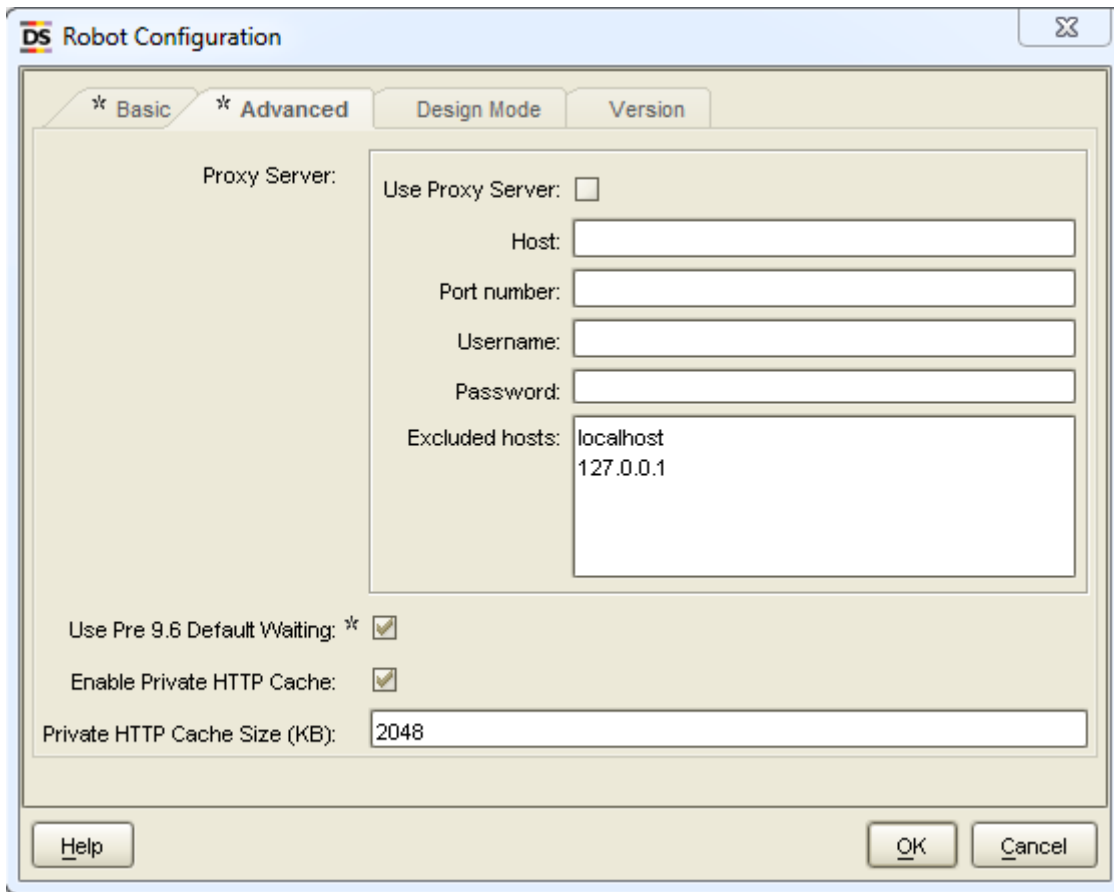
- Upgrading a package replaces all the files in the `/opt/Kapow/` directory.
- When you start the upgrade procedure, the `init.d` service is stopped and replaced with a new version. The service is stopped immediately without waiting for robots to finish executing. If you do not want to interrupt the execution of the robots, stop the roboserver manually before upgrading.
- A new `roboserver.settings` file is created for the new service. The new file is created in `/home/kapow/.Kapow/<release_version>/Configuration/` similarly to the old one. That means a new directory is created for the new release so that the old configuration file remains intact in the folder with the older release name. The link to the configuration file in `/etc/opt/Kapow/RoboServer.conf` points to the settings file in the last installed release.
- The configuration from the old `roboserver.settings` file is not transferred to the new one, this must be done manually.

Upgrade from Version 9.3-9.5

When a robot from one of the previous versions (9.3, 9.4, 9.5) is opened, a legacy wait criteria is added to the robot using the "Max. Wait for Timer Events" and "Wait Real-Time for Timer Events" ensuring the same behavior as in 9.5. This cannot be edited, but it can be removed and replaced with new criteria to improve performance if possible.



To switch to the new default settings when updating an existing robot to 9.6, go to the **File > Configure Robot** dialog box, click the **Advanced** tab and clear the **Use Pre 9.6 Default Waiting** check box.



Customers Upgrading From 9.2

Kapow version 10.2 is fully backward compatible with 9.2 and your current robots will run with the Classic Browser Engine as in 9.2, there is no need to migrate existing working robots to the new Default browser. We recommend building new robots using the Default browser, but in case the web site does not render in the Default browser, we recommend switching to Classic. This will particularly be the case for legacy web applications designed specifically for old versions of Internet Explorer.

Note that the Default browser is using Chrome as the browser to emulate, while the Classic browser emulates Internet Explorer. This can cause Classic and Default to render pages differently and return a different Document Object Model (DOM), so when migrating from a Classic to a Default robot, the tag-finders may be different and require modification.

Chapter 6

Quick Start Guide

This chapter explains how to get started using Kofax Kapow.

Prerequisites

- The examples below use a standalone Management Console (NOT deployed into Tomcat) and RoboServer that are on a different computer than Design Studio.
- This chapter assumes you have at least a non-production key for running a Management Console.
- All Kofax Kapow documentation files can be downloaded from the [Kapow Product Documentation \(Master\)](#). After Kofax Kapow is installed, the documentation files can also be found in the Documentation folder from the Kapow installation folder.

Install the software

1. Make sure that the system requirements are met. See [System Requirements](#).
2. Install the Kapow software on the computer where you will use Management Console and RoboServer. Follow the [Install Kapow](#) section for your OS.
3. Install the software on the computers where Design Studio will be running. You can use the installer that only installs Design Studio (since we will use Management Console for licensing).

Start the Management Console and RoboServer

To start a Management Console and RoboServer in the same Java Virtual machine, either run Start Management Console from the Start menu on Windows or run the following command from the bin folder of the Kapow installation folder.

- On Windows: `RoboServer -MC -p 50000`
- On Linux: `./RoboServer -MC -p 50000`

Notes

- All RoboServer command parameters are listed in the Runtime chapter of the *Administrator's Guide*.
- You can reach Management Console on `http://<ServerNameOrIP>:50080`. Additional settings (different port, HTTPS usage, and so on) are available in the RoboServer Settings application.
- You can start RoboServer on different ports (default is 50000). By default, Kapow registers the RoboServer on the port specified in the command for this Management Console.
- It is possible to start Management Console and RoboServer in separate JVMs by running the RoboServer command with separate parameters.

Refer to the RoboServer parameters in the *Administrator's Guide*.

`RoboServer -MC` command starts Management Console only.

`RoboServer -p 50000 -mcUrl http://ServerName:50080 -cl "Production"` command starts a RoboServer on port 50000 and registers it to the Management Console at `ServerName:50080` under the Production cluster.

- A Kapow environment always has one Management Console that can control multiple RoboServers. Do not configure multiple Management Consoles to control the same RoboServer.
- It is possible to configure Kapow Management Console and RoboServers to start automatically. See the [Kapow Initial Configuration](#) chapter for more information.

Access Management Console and enter the license key

Use your browser to start the Management Console. Example:

`http://MCServerName:50080.`

The first time you access the Management Console, it prompts for the license key. Make sure that the keys and the company name match exactly the data you received from Kofax. The license data can later be replaced in the Management Console > Admin > License tab.

Note Click the Help icon (?) on any tab to get more information about the open window. The icon is usually on the top right corner.

Configure Management Console settings

Management Console security settings are configured on the Management Console tab of the RoboServer Settings application. You can open the application from the Kapow group on the Start menu or from the bin folder in the Kapow installation folder.

It is very important to run the RoboServer Settings application as the same user that runs Management Console. Otherwise, the changes are not applied.

Change Management Console port: change "HTTP Port Number"

To change the default port number, on the **Management Console** tab in the RoboServer Settings application, edit the **HTTP Port Number** property.

Enable Management Console authentication (optional)

1. On the **Management Console** tab, select **Enable User Management**.
2. Enter the Admin username. This is your initial admin user; you can add additional users and create groups later from the Management Console itself.
3. Click **Enter password** and set the admin password.

Note If user management is enabled, check the documentation for the correct way to set the RoboServer to register to this Management Console. See the "Start RoboServer" section in the Administrator's Guide.

Upload JDBC driver

The JDBC Driver Upload option changes the way the JDBC drivers are uploaded. By default, only an admin user is allowed to upload a JDBC driver and only while accessing the Management Console on the computer it is running (localhost). If you are accessing the Management Console from a different computer and if you need to upload JDBC drivers (to use with databases), change this option to **Admin from any host**.

More detailed information, including information about the other tabs in the RoboServer Settings application, is available in the "Runtime" section in the Administrator's Guide.

Important The Management Console and RoboServer must be restarted for changes done in the RoboServer Settings application to take effect.

Management Console with authentication

When authentication is set up, the Management Console prompts you for a user name and password. Enter the user name and password set in the RoboServer Settings application. When you are logged in, the user name is shown in the top right corner.

Create users and groups

Create new users and groups (or assign users to groups) from Management Console > Admin > Users & Groups tab.

Note that there is no connection between users/groups and your Active Directory/LDAP/Domain users and groups. If users change their domain password, it has no effect on the user credentials for the Management Console.

Although it is possible to integrate Kapow Management Console with LDAP, this is an advanced configuration that only works when Management Console is deployed as an application in a stand-alone Tomcat web server. For details, see the Tomcat Management Console topic in the *Kapow Administrator's Guide*.

Add users to groups

There are two ways to add users to groups.

- Select a user, click **Edit User** and use the arrows to add the groups the user should be a member of.
- Select a group, click **Edit Group** and use the arrows to add members.

Assign rights to users

Important A user created in the Management Console is able to log in to the Management Console **only if** the user is part of a group that has been assigned rights to at least one project.

To assign rights to access projects, follow these steps:

1. Go to **Management Console > Admin > Projects**.

2. Create a project or open the existing project properties by clicking the Edit icon (🔗).
3. Go to the Permissions tab and click **Add Permission**.
4. Select a project role in the **Project Role** drop-down list.
See "Manage Users and Groups" in help or in the *Kofax Kapow User's Guide*.
5. Select the group in the **Security Group** drop-down list.
6. Add other groups if needed and click Save.

Configure Management Console before running robots

JDBC database drivers

Kapow has a default database that can be used for logging (logdb) and for robots to store data (objectdb). To use this database, start it from the Kapow program group under (Start > Programs) using Start Development Database. An executable can be found in the bin folder (in the installation folder) too.

If you want to use a custom database (which is recommended even when testing), do the following **first**.

1. Check [Supported Platforms](#) to see the database systems that Kapow supports.
2. Get the JDBC driver for the database. Kapow does not provide these drivers, but you can download them from the database provider, such as Microsoft, Oracle, or other.
3. Upload the JDBC driver in the Management Console > Admin > Settings > Database Drivers by clicking the Upload Driver Jar button.

Note If the Upload Driver Jar button is disabled, you might be accessing the Management Console from a different computer than the one on which it is running and you have not changed the setting to allow driver upload from a different computer. See "Upload JDBC driver" in the [Configure Management Console settings](#) and change the "JDBC driver upload" to "Admin from any host". Restart Management Console (the process itself) and the "Upload Driver Jar" button should be enabled.

4. Click Save to save the JDBC driver in Management Console. You can see it listed under "Database Drivers."

To use multiple types of databases in the same Management Console, upload the driver they should use.

RoboServer log database

By default, the RoboServer log database is set to logdb (which can be accessed if you start the Development database only).

You can configure the RoboServer log database as a custom database. If the user you provide has rights to create tables in this database, Kapow creates all the tables it needs.

If the user cannot create tables, a database administrator has to create them before the database is configured as a RoboServer log database. See "Scripts for Creating Database Tables" in Kapow help or the Kapow User's Guide to get the queries needed to create the log tables (make sure to get the one that applies to your database type).

Your user must be able to write to these tables.

After the RoboServer Log Database is configured, you can see all the logs in the Management Console > Logs tab.

Harvest database

Robots can store data in databases or query tables for data. By default, `objectdb` is used (Development Database). To use a custom database, follow these steps:

1. In Management Console, go to **Admin > RoboServers** and open **Cluster Settings** (click the icon or right-click the cluster to see the option).
2. Click **Databases** and then **Add a Database**.
3. Fill in the information, click **Test** to make sure Management Console connect to the database, and click **OK** to save the settings.

Note The Name option is the name of the mapping, not the database (you specify the actual database name in the Schema option). The mapping name differ from the database name and you can keep it different if you do not want robot developers to know the real name of the database. If security is not a concern, you can keep the mapping name the same as the database name (less confusion).

Data stored by robots in this database can be viewed from Management Console > Data tab. Only tables created from types are shown. If a table is created in SQL Manager, you will not see it in Management Console (even if you have robots configured to query it or add/change data in it).

Shared Databases (between Management Console and Design Studio)

Management Console can push database mappings created under Cluster Settings to Design Studio instances. If you have multiple clusters, only one cluster can push database mappings.

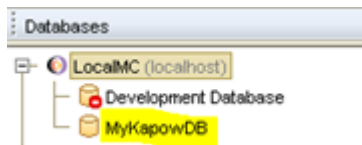
To configure Shared Databases, follow these steps.

1. Select which clusters will push the databases: go to **Management Console > Admin > Settings > Design Studio > Shared Databases**.
2. Create your database mappings under Cluster settings (see the "Harvest database" topic for details).
3. Assign database mappings to projects as follows:
 - a. Go to **Management Console > Repository > Databases** and click **New Database Mapping**.
 - b. Fill in the information.
 - Mapping Name: It can be the same as the name given when creating the mapping in Cluster Settings (it can be different too, but might cause more confusion).
 - Project: Set to the project where this mapping will be used.

Note Keep in mind project permissions when using authentication (see [Management Console with authentication](#) for details). If a mapping is assigned to a project, only users with rights to that project will be able to use it (and see its data when opening Management Console > Data tab).

- Cluster: Must be the same as the one you already set for "Shared Databases."
- Database Configuration: Select the mapping created in Cluster Settings from the drop-down list.

4. After you save these settings, the users that have Design Studio connected to this Management Console can right-click the Management Console connection under **Databases**, select **Refresh** and have the mapping available as in the following example.



Build Robots

Robots are built in Design Studio. See [Enter License in Design Studio](#) for more information on how to start Design Studio and configure a license for it.

Then see "Tutorials" in the *User's Guide* for more information about building robots. From any step in Design Studio you can click the help icon (🔗) to open help and read more information about that specific step.

Design Studio also has a default project (its name is the name of the version, such as 10.3.0_166) where you can find robot examples for common operations.

Upload Robots


It is easier to upload robots from Design Studio. To upload a robot, right-click the robot under **My Projects** and select **Upload**. In the Upload to Management Console dialog box, select the Management Console and the Project where the robot should be uploaded.

Notes

- You cannot create a project from the Upload dialog box; it must be created in the Management Console in advance.
- When using this option, you only need to select the robot. Design Studio automatically sends all the types and snippets that it uses.
- You can share a project between Management Console and Design Studio by selecting "Remember this (as a shared project)." You can find more information about shared projects and how to work with them in the "Projects and Libraries" topic in the *Kapow User's Guide*.
- You can also upload the robot files directly in the Management Console but you have to select the robot and each type and snippet one by one. Go to Management Console > Repository tab and you can see the Add buttons on each tab (Robots, Types, Snippets).

Run robots

Run robots from Repository

Each robot in Repository has a "Run Now" icon (). However, only robots that do not require input can be run this way. If your robots require input, they can only be run by a schedule (by Management Console), API or REST/SOAP services. See the next sections for more information.

If you have multiple clusters, you will be asked to select a cluster on which to run.

Run robots from a schedule

You can create a schedule from the Management Console > Repository > Robots tab by right-clicking a robot and selecting **Create Schedule**.


This automatically adds the robot to the schedule. The other option (easier to use when you want to add multiple robots to a schedule) is to use the "Add" button on the Management Console > Schedules tab.

Run robots via API

You can see the API icon () in Management Console > Repository > Robots.

Clicking the API icon opens the sample code for Java and .NET APIs that you can use to call this robot. More information is available in the *Kofax Kapow Developer's Guide*.

Run robots using REST/SOAP

Click the REST/SOAP icons () in Management Console > Repository > Robots to get a service example that you can use to call that specific robot.

Performance graphs in Management Console

Management Console has a few basic performance graphs on the **Dashboard** tab.

By default, only the most used ones are open, but you can open additional graphs by selecting them in the drop-down list and clicking **Add**.

More types of graphs are available when using Kofax Analytics for Kapow, which is a separate software that you can purchase. Contact your sales representative for more information.